



Asset Enhancement : Unlocking the Hidden Value in Our Buildings

CONTENTS



CEO'S MESSAGE

行政總裁的話

Welcome to our June 2017 issue of JEC Magazine. More than half of this year has sped by already and so far it has been a satisfactory year. I would like to thank you all for your continuous support. We look forward to strengthening our close partnerships through the rest of the year and beyond.

Our feature story this issue explores how renovation and refurbishment can enhance the productive value of building assets for a more sustainable built environment. It highlights how JEC's multi-disciplinary building services capabilities help our customers meet strategic, energy, environmental and performance objectives.

For example, a major new six-year programme for JEC Hong Kong to replace environmentally friendly chillers at stations on six MTR lines will serve to maintain a comfortable service environment for increasing numbers of passengers.

At Hong Kong International Airport, JEC will construct new baggage handling systems for arrival bags delivery and early bag storage to support ongoing expansion and increased number of passengers. Around the region, JEC Thailand secured the significant Suvarnabhumi Airport Expansion and Mega Bangna projects, while JEC Philippines picked up contracts to provide full facility maintenance at the expanding FamilyMart convenience store chain.

Our new Product Solutions section features fittings and fixtures that provide durable, cost-effective and appealing finishing touches to any commercial environment.

Lastly, JEC is honoured to be one of the sponsors of the World Sustainable Built Environment Conference Hong Kong 2017, where our green and sustainable product and service offerings were presented.

I hope you enjoy reading this issue of the JEC Magazine.

歡迎閱讀2017年6月份的怡和機器雜誌。下半年轉瞬便至，怡和機器年內的業務發展保持順遂。我在此感謝各位客戶一直支持怡和機器，並期望往後繼續加強合作。

今期特寫探討翻新和修繕工程如何提升建築物的價值，從而推動可持續建築環境，並展示怡和機器多元化的屋宇裝備服務如何幫助客戶實踐有關策略、能源、環境和績效方面的目標。

譬如，香港怡和機器將負責一項為期6年的全新重點項目，替港鐵6條路綫的車站更換環保製冷機組，讓港鐵即使面對乘客人數增長，仍能保持車站環境舒適。

另外，怡和機器正為香港國際機場建造新的行李處理系統，用於運送抵港行李及存放早到行李，以支援正在進行的機場擴建工程，同時應付旅客數目的增長。在海外地區，泰國怡和機器承辦了曼谷國際機場及Mega Bangna購物中心的項目，而菲律賓怡和機器則與FamilyMart集團簽訂合約，為其連鎖便利店提供全面的設備保養服務。

今期「產品方案」專欄會介紹多款耐用、具成本效益及設計得體的室內裝置和設備，適用於各式商業場所。

最後，怡和機器很榮幸能成為2017年度香港可持續建築環境全球會議及展覽會的贊助商之一，我們於場內展示了公司的綠色及可持續產品和服務。

我希望大家喜歡今期怡和機器雜誌的內容。

Wilson Kwong
鄺永銓

Asset Enhancement:
Unlocking the Hidden Value
in Our Buildings
資產提升：
釋放建築群的潛在價值

P.04 ►►

P.02 CEO's Message
行政總裁的話

P.04 Feature Story
特寫

Asset Enhancement:
Unlocking the Hidden Value in Our Buildings
資產提升：
釋放建築群的潛在價值

P.09 News
簡訊

JEC Awarded a Large-scale MTR Station Chiller Replacement Programme to Continue Bringing Comfortable Station Environment to Passengers
怡和機器獲得港鐵大型更換製冷機組工程繼續為乘客帶來舒適的車站環境

JEC Constructs Baggage Handling Systems for Arrival Bags Delivery and Early Bag Storage
怡和機器增建行李處理系統有助輸送抵港行李及儲存早到行李

JEC Secured Term Contract for Inspection and Overhaul of E&M Installations at Sewage Treatment Works in Shatin and Sai Kung
怡和機器獲得沙田及西貢污水處理廠機電設備的檢修合約

JEC Thailand Awarded Suvarnabhumi Airport Expansion & Mega Bangna Plot H Projects
泰國怡和機器獲得曼谷國際機場擴建項目及Mega Bangna H區項目的工程合約

JEC Philippines Awarded Full Facilities Maintenance Contract from FamilyMart
菲律賓怡和機器獲得FamilyMart的全面設備保養合約

JEC Philippines Equips Widus Hotel & Casino with MVAC System and LPG System
菲律賓怡和機器為Widus賭場酒店安裝機械通風及空調系統和石油氣系統



JEC Thailand Honored to Co-host the Royal Funeral Rite of His Majesty Late King Bhumibol Adulyadej
泰國怡和機器榮獲邀請協辦已故泰王普密蓬·阿杜德的皇家葬禮儀式

Jardine Distribution, Inc. Continues to Partner with Filipino Farmers to Improve Livelihood
JDI持續協助菲律賓農民改善生活

JEC Promotes Green Building Solutions in WSBE 2017
怡和機器於2017年度可持續建築環境全球會議推廣綠色建築方案

JEC Spring Dinner 2017
2017年度怡和機器周年晚宴

P.14 Product Solutions
產品方案

Finishing Well – Building Products that Signify Class and Deliver Quality
裝潢得體 — 彰顯格調和品質的建築產品

P.16 Environmental, Health & Safety
環境、健康與安全

Safety First!
Our Commitment to Achieve "Vision Zero"
安全第一！
對「零意外」的追求與實踐

P.18 Training & Development
培訓及發展

JEC Pledges Support Towards "Innovate Jardines" Business Challenge
怡和機器響應怡和集團「Innovate Jardines」計劃的業務挑戰

P.20 Community Care
關懷社區

Walk Up Jardine House 2017
2017「齊步上怡廈」

Discover Hong Kong's Living History on Tramways
「遊電車河」尋找香港歷史足跡

P.21 Major Contracts Listing
工程合約



JEC Awarded a Large-scale MTR Station Chiller Replacement Programme to Continue Bringing Comfortable Station Environment to Passengers

怡和機器獲得港鐵大型更換製冷機組工程
繼續為乘客帶來舒適的車站環境

P.09

JEC Promotes Green Building Solutions in WSBE 2017

怡和機器於2017年度可持續建築環境全球會議推廣綠色建築方案

P.13



JEC Pledges Support Towards "Innovate Jardines" Business Challenge

怡和機器響應怡和集團「Innovate Jardines」計劃的業務挑戰

P.18



Discover Hong Kong's Living History on Tramways

「遊電車河」尋找香港歷史足跡

P.20



FEATURE STORY



Asset Enhancement: Unlocking the Hidden Value in Our Buildings

資產提升：釋放建築群的潛在價值

Organisations and society invest enormously in buildings and the built environment. Once erected, premises risk locking in the constraints and world view of their time, becoming less and less appropriate to the needs of owners and users as the years pass, but they hold too much investment to demolish and start over.

各大機構以至全社會在建築物和建築環境上投資鉅萬。每棟建築物都會受到落成時的環境條件和世界觀制約，並且隨着時間流逝，漸漸滿足不了業權人和使用者的需要，惟拆卸重建等同放棄早年所作的大額投資。

Businesses and institutions are increasingly turning to various forms of asset enhancement to re-align the buildings they own and occupy with current market, technological and societal realities. Re-investing in an existing physical asset can enhance revenue streams, allow a change of business strategy, reposition a service offering at a higher level, or retain customer loyalty and goodwill, pre-emptively avoiding functional senescence of buildings.

JEC has unmatched institutional experience in supporting clients to reinvigorate their assets, applying its full spectrum of engineering solutions and services and culture of cross-disciplinary collaboration among teams to deliver custom facility renovation and refurbishment – from electrical and mechanical systems to fit-out and décor to the latest integrated building management systems, all complemented by a deep-rooted sustainability mindset.

現時企業和機構正致力以各種資產提升的方式，因應當前的市場、科技和社會現況，重整旗下物業。對一項現存的實物資產作再投資有幾個好處，例如能加強收益流、促成商業策略的轉變、提升服務層次、鞏固顧客忠誠度和商譽，以及預防建築物老化。

怡和機器曾為不少客戶的資產注入新景象，經驗豐富。憑藉全方位的工程方案和專業服務，以及團隊間跨領域合作的文化，怡和機器得以為客戶提供專屬的設施翻新及修繕服務—從機電系統、設備和裝飾，以至最先進的綜合樓宇管理系統，而且全都結合了可持續發展的概念。



▲ Cooling water pumps at level 22 of UOB Plaza One
位於大華銀行大廈一座22樓的水泵房



Lowering energy consumption 省電節能

In Asia and around the world, cities are expanding and concentrating as new economic powerhouses blossom upwards in a profusion of skyscrapers.

Alongside, there is growing pressure to reduce energy consumption, as a business efficiency gain as well as to curb the fossil fuel consumption that leads to climate change and to mitigate the local urban heat island effect.

Advances in building management, and especially energy usage, allow JEC to leverage the organised nature of today's high-rise multi-occupant buildings to implement dramatic efficiency improvements.

In 2012, JEC Singapore took on the renovation and re-engineering of operations systems for the iconic 280-metre, 66-storey UOB Plaza One, in the heart of Singapore's business district.

JEC Singapore introduced an energy management regime that optimises energy consumption for the whole building, year-round, replacing two existing pumps with a single system, installing a condenser water facility for the data centre, upgrading air handling units and fan coil units, and fitting high-energy-saving LED lighting in all common areas, among other improvements.

The resultant drop of nearly 25 percent in monthly electricity consumption (2012 to 2015) saved some more than 5 million kilowatt hours every year. Increased chiller efficiency led to a further 4 percent reduction in water consumption, easing demand for another of the earth's precious resources.

In Thailand also, concerns to reduce environmental footprint, enhance service levels and reduce costs led Siam Discovery — one of Bangkok's most popular shopping destinations — to invest more than 4 billion baht in the centre's first overhaul since it opened in 1997.



在泰國，作為曼谷市內最受歡迎的購物中心之一，Siam Discovery關注如何減少環境足跡、提升服務水平和降低成本，並為此斥資超過4億泰銖，進行1997年開業以來的首次全面翻新。

◀ Chiller plant of Siam Discovery
Siam Discovery的製冷系統

在亞洲以至世界其他地區，城市正不斷擴展，大量摩天大樓拔地而起，儼如經濟新動力的象徵。

與此同時，節約能源的壓力亦正在增加。企業在維持獲利的同時，亦必須減少消耗會引致氣候變化的化石能源，並舒緩城市的熱島效應。

怡和機器精於建築物管理，在能源使用範疇尤為領先，因此能為現今層數和使用密度俱高的建築物，引進大規模的能源效益提升方案。

樓高280米、共66層的大華銀行大廈一座大樓，位於新加坡商業區的中心地帶。2012年，新加坡怡和機器負責翻新和改造這座標誌性建築物的營運系統。

公司引進了一套能源管理系統，從而改善整座大樓全年的耗能表現，方法包括將原有的兩套水泵換成單一系統、為數據中心裝設冷凝器系統、為風櫃和風機盤管進行升級，以及在所有公用地方裝設高度節能的LED照明等，此外尚有其他優化工程。

在2012至2015年間，該大廈的每月耗電量平均下降約25%，亦即每年節省超過500萬千瓦時電力。由於提升了製冷設施的效益，因而額外減少了4%用水，舒緩了大廈對另一項地球珍貴資源的需求。

JEC Thailand won the contract in 2015 to supply, install, test and commission the air-conditioning and ventilation systems, sanitary system and fire protection systems across Siam Discovery's seven storeys and total area of 40,000 square metres.

A key component of the system was JEC Thailand's selected chiller plant management system (CPMS), which controls and sequences all components of the chiller plant, including chillers, pumps, cooling towers and automatic control equipment, to optimise energy efficiency. The CPMS constantly balances component run times and notifies operators whenever maintenance is required, reducing energy consumption and operating costs by 20-30 percent – a win for operators, users and the environment.

泰國怡和機器於2015年獲得Siam Discovery的合約，為這座樓高7層、佔地40,000平方米的商場供應、安裝、測試及調試空調與通風系統、衛生系統和消防系統。

其中一個關鍵系統，是由泰國怡和機器引進的製冷機組管理系統（CPMS），它能調控制冷系統的各個部件，包括製冷機、水泵、冷卻塔和自動控制設備，從而提升能源效益。CPMS能使部件的運作時間保持均衡，並在需要維修時提示操作人員，可減少兩至三成耗電和營運成本，是對營運者、使用者和環境都有利的「三贏」方案。

More passengers, greater comfort 客運量增 無礙舒適

▼ Shatin MTR station is one of the stations requires chiller replacement
港鐵沙田站是其中一個進行製冷機組翻新的車站



► (From right) Taylor Wong, his project team key members Jacky Yip, King Li, Michael Hui and operations staff work around the clock to provide dedicated engineering services to MTR

(由右起) 黃嘉俊與其團隊主要成員葉世榮、許健熙、李澤敬以及前綫員工，日以繼夜為港鐵提供卓越的工程服務

In densely populated Hong Kong, the backbone of transport infrastructure is the MTR network, renowned for both its efficiency and all-day loading levels. With the expansion of the MTR network, road traffic bottlenecks can be eased and people living in less developed areas can enjoy safe, reliable and comfortable commuting experience.

As one of the world's leading railways operators that connects and grows the community with caring railway service, the MTR Corporation is committed to providing a safe, reliable and comfortable traveling experience for the millions of passengers who commute on MTR network, which includes underground environments such as station concourses, platforms and adits. With already a very high volume of passenger traffic, the loading is only set to increase as the new lines open.

JEC has been awarded a contract to replace and renew the 81 chillers and associated air conditioning facilities, over a six-year programme, at 17

在人煙稠密的香港，鐵路系統是運輸基建的核心，以效率高及載客量多見稱。鐵路網絡的擴張有助舒緩道路交通擠塞，並讓偏遠地區的居民也能獲得安全、可靠和舒適的乘車體驗。

作為世界領先的鐵路營運商之一，港鐵公司以貼心的鐵路服務連繫及發展社區，致力為數百萬乘客提供安全、可靠和舒適的乘車體驗，範圍涵蓋地下環境如車站大堂、月台和地下通道。港鐵的載客量已非常高，隨著新綫路開通，人流亦將會日益增加。

怡和機器已獲得為期6年的合約，為6條港鐵綫（港島綫、觀塘綫、荃灣綫、將軍澳綫、東鐵綫及西鐵綫）當中的17個車站及火炭和九龍灣兩個車廠，更換

MTR stations along six major lines (Island Line, Kwun Tong Line, Tsuen Wan Line, Tseung Kwan O Line, East Rail Line and West Rail Line) as well as two depots, at Fo Tan and Kowloon Bay. The contract award followed the successful execution of a pilot project to upgrade the three chillers at Wanchai station, during the network's 2016-17 winter shutdown of air-conditioning. To satisfy the client's environmental goals, JEC offered oil-free variable speed drive (VSD) chillers for Wanchai station, for their outstanding coefficient of performance which significantly exceeds the level specified in the tender and Electrical and Mechanical Services Department (EMSD) Building Energy Code.

Without interrupting daily operation of the 17 MTR stations – which include but not limited to Central, Causeway Bay, Lai King, Cheung Sha Wan, Choi Hung, Hang Hau, Tin Shui Wai, Siu Hong, Shatin and Lo Wu, JEC will design, supply and install energy-efficient and environmentally friendly chiller systems complete with associated physical and advanced control systems. The highly controllable VSD chillers that JEC recommended will help MTRC meet EMSD's new Energy Efficiency Grading Standards.

和翻新81個製冷機組和相關空調設施。在取得此合約前，怡和機器已於去年末至今年初的冬季，成功在一項先導計劃中為灣仔站更新了3部製冷機組。為協助客戶實踐環保目標，公司在灣仔站安裝的無油製冷機組配備了變速驅動器（VSD），其出色的效能系數，大幅超過標書上所列出以至香港機電工程署《建築物能源效益守則》所規定的要求。

在不影響車站日常運作的情況下，怡和機器將為17個港鐵車站——包括但不限於中環、銅鑼灣、荔景、長沙灣、彩虹、坑口、天水圍、兆康、沙田及羅湖——設計、供應和安裝節能環保的製冷機組，並配置相關的人手和電腦操控系統。怡和機器建議使用的VSD製冷機組靈活度高，將有助港鐵公司符合機電工程署新的能源效益級別標準。

Skating on perfectly thin ice 履在薄冰

Another instance of JEC lifting the end-user experience to keep a property relevant is the recent rink system replacement at Macau's only full-service ice rink. JEC Macau built the aging ice maintenance mechanism to provide reliable and safe skating experience for users, including replacing the ice rink screw chiller and pumping system. The new system ensures that the sprayed ice rink layer is substantive enough to assure users' safety, but not overly deep, which wastes energy. The project at the 11,000-square-foot ice rink, at Future Bright Amusement Park, was completed in time for Chinese New Year 2017, when the SAR's ice lovers showed up to rate it a perfect '10'.



另一個怡和機器藉提升用家體驗以保持物業價值的例子，是為澳門唯一的真雪溜冰場更換溜冰場系統。澳門怡和機器建造了融雪保養裝置，為溜冰人士帶來安全可靠溜冰新體驗，當中包括更換溜冰場的螺旋式製冷機和水泵系統。新系統確保灑水形成的冰面堅固之餘不會過厚，保障安全之餘亦能節省用電。溜冰場位於佳景樂園，佔地11,000平方呎，工程已於2017年農曆新年完成。澳門溜冰愛好者對場地的評價為最高分10分。

Keeping up appearances 歷久常新

In the heart of Hong Kong's Central business district, Hongkong Land owns and operates a portfolio of prestigious properties, filled with high-end retail and commercial tenants. Of varied vintages, the buildings are still able to meet the exacting demands of leading businesses, and present an image befitting that standing, thanks to careful and continuous regeneration of their facilities and outfitting by Hongkong Land.

在香港中環商業區的心臟地帶，置地公司擁有並營運多座知名物業，由許多高檔零售和商業租戶承租。多座知名的建築物至今仍能滿足大型企業的嚴格要求，並展現出與這些企業相配的高尚形象，這有賴置地公司一絲不苟並持續地提升各項設施和裝置。



▲ Fred Chan (2nd left) and his project team including (from 1st right) Chris Pun, Ng Hoi-ming and Leon She partner with Hongkong Land to pursue excellence for its Central portfolio.

陳燦明（左二）及其團隊成員包括（由右一）潘劍平、伍凱銘和余俊彥，同心協力與置地公司攜手優化其中環物業組合

◀ Busducts installed in the Exchange Square
交易廣場內的電巴裝置

Based on their longstanding relationship, JEC is pleased to have the trust from Hongkong Land to implement a major power system upgrade for Exchange Square, which includes busducts and other electrical equipment. JEC was also responsible for the inclusion of a Power Quality Management System (PQMS) which has significantly increased the reliability of the system by monitoring electrical systems and capturing breakdown and incident data. Refurbishment was carried out during overnight downtime, on a schedule that could be monitored by the client through a series of progress checking points.

The successful project of electrical upgrading was then extended to some of Hongkong Land's properties: Alexandra House and Prince's Building as well as Landmark Atrium, all of which remain highly sought-after locations, with switchboard upgrades and the installation of PQMSs.

由於雙方合作已久，怡和機器獲得置地公司的信任，負責更新交易廣場的大型供電系統，包括廣場的電巴和其他電力設備。怡和機器亦負責安裝供電質量管理系統（PQMS），藉着監測電力系統並記錄故障及事故的數據，大幅提升系統的可靠性。翻新工程於半夜的非營業時間進行，客戶可透過一系列的流程以監察進度。

這項成功的電力系統更新工程，隨後更擴展至其他置地公司的物業，包括歷山大廈、太子大廈以及置地廣場中庭，各項物業的總電掣櫃均經過更新並裝設供電質量管理系統。

Value in plain sight 價值顯而易見

Renovation and refurbishment of built assets offer significant opportunities to re-align with strategic goals, meet energy and environmental challenges, deliver improved performance and return higher profitability. By upgrading building services, structures that might become regarded as tired deliver new value, in enhanced capacity, revised functionality or augmented positioning.

JEC is ideally placed to apply its broad experience of tailoring building services and more to a specific client environment and strategic goals, based on an unmatched combination of engineering excellence, scale, multi-disciplinary teams, and responsiveness in planning and delivery.

翻新與修繕已建成的資產，往往為重整策略目標、克服能源與環境挑戰、改善表現並賺取更高利潤提供重要機會。透過提升屋宇裝備工程，物業中一些原本被視為老化的結構，也能產生新價值，如空間增加、功能調整及檔次提升。

怡和機器矢志運用其在屋宇裝備工程方面的豐富經驗，並結合工程專業、規模、跨領域團隊以及規劃與執行上的應變力，為每位客戶提升建築環境和實踐策略目標出謀獻策。

JEC Awarded a Large-scale MTR Station Chiller Replacement Programme to Continue Bringing Comfortable Station Environment to Passengers

怡和機器獲得港鐵大型更換製冷機組工程
繼續為乘客帶來舒適的車站環境

JEC continues to provide a more comfortable travelling environment for the MTR passengers in Hong Kong by carrying out large-scale chiller replacement programme with advanced and environmentally friendly systems at 17 MTR stations along six operating railway lines including Island Line, Kwun Tong Line, Tsuen Wan Line, Tseung Kwan O Line, East Rail Line and West Rail Line, as well as two railway depots at Fo Tan and Kowloon Bay.

The replacement programme will be started from the fourth quarter of 2017 and is expected to be completed by 2023. JEC will replace over 80 air-cooled chillers with environmental-friendly chiller systems with variable speed drive technology that enhances energy efficiency, reduces greenhouse gaseous emission and wastage and maintains the temperature in underground station areas at a comfortable level for passengers.

As the pilot of the ongoing station improvement programme of MTR Corporation, JEC has been upgrading the chiller systems for Wanchai station since last winter.

怡和機器透過引入先進及環保裝置進行大型的更換製冷機組工程，為港鐵乘客提供更舒適的車站環境。工程範圍覆蓋6條鐵路線，包括港島綫、觀塘綫、荃灣綫、將軍澳綫、東鐵綫及西鐵綫沿綫17個車站，以及何東樓車廠和九龍灣車廠。

更換工程將於2017第4季度展開，預計於2023年竣工。怡和機器將供應及安裝更環保的製冷系統，以取代超過80台現有的風冷式製冷機組。新系統採用變頻技術，能進一步提高能源效益，有助減少溫室氣體排放，以及在地底車站維持一定程度的溫度，讓乘客感到環境舒適。

作為港鐵公司車站提升工程計劃的第一站，怡和機器已率先在去年冬季起，為灣仔站安裝全新的製冷機組。



JEC Constructs Baggage Handling Systems for Arrival Bags Delivery and Early Bag Storage

怡和機器增建行李處理系統
有助輸送抵港行李及儲存早到行李

Preceded by the project of programmable logic controllers' replacement for Baggage Handling System (BHS), JEC has been awarded another significant contract from Airport Authority Hong Kong to construct two BHS for arrival bags delivery and early bag storage at the Hong Kong International Airport.

JEC will design, supply and install the Automation of Arrival Bags Delivery and deliver associated E&M and system works in the Baggage Reclaim Hall and Remote Transfer Facilities of Terminal 1 (T1), Midfield Concourse and North Destination Coded Vehicle Tunnel. We are also responsible for the design, supply and installation of Early Bag Storage System in T1 Baggage Reclaim Hall and new T1 Annex Building. Major works of this project include conveyor equipment provision and necessary structural works.

The installation, which has commenced since April 2017, will help to improve the efficiency of bags transfer from Midfield Concourse to Terminal 1. The project is expected to complete in August 2019.

繼早前為行李處理系統更換可編程邏輯控制器後，怡和機器再度獲得香港機場管理局的重要工程合約，為香港國際機場增建兩組行李處理系統，供輸送抵港行李及儲存早到行李之用。

怡和機器將負責在一號客運大樓的行李認領大堂和特快行李中轉設施、中場客運廊以及目的地編碼車北隧道，設計、供應及安裝抵港行李自動化運輸系統，並提供相關的機電和系統工程。同時公司亦會負責為一號客運大樓的行李認領大堂及新附屬大樓設計、供應及安裝早到行李儲存系統。這個項目的主要工程包括安裝輸送帶設備及其他必要的結構工程。

新增的系統已於今年4月開始安裝，將有助提升行李從中場客運廊輸送至一號客運大樓的效率。項目預計於2019年8月完成。

JEC Secured Term Contract for Inspection and Overhaul of E&M Installations at Sewage Treatment Works in Shatin and Sai Kung

怡和機器獲得沙田及西貢污水處理廠機電設備的檢修合約

JEC secured a 3-year contract from the Drainage Services Department to conduct inspection, overhaul and maintenance service at various Sewage Treatment facilities in Shatin and Sai Kung Districts. The major scope of works includes overhaul and maintenance of electrical and mechanical equipment, and inspection, testing and certification for fixed electrical installations, covering 47 sewage treatment works and pumping stations in both districts. The contract has commenced since April 2017 and is due to complete in 2020.

怡和機器獲得渠務署的定期合約，為沙田及西貢區各污水處理設施進行檢驗、維修和測試，為期3年。主要項目包括機電設備的全面檢修和維修，以及固定電力裝置的檢測，涉及兩區內合共47個污水處理廠和污水泵房。工程已於今年4月展開，預計於2020年完成。



JEC Thailand Awarded Suvarnabhumi Airport Expansion & Mega Bangna Plot H Projects

泰國怡和機器獲得曼谷國際機場擴建項目及 Mega Bangna H區項目的工程合約

JEC Thailand has been awarded the contracts to supply, install, test and commission the tunnel ventilation system and sanitary & fire protection system for the expansion of Suvarnabhumi Airport.

The expansion works involves the extension of south tunnel to link up the Main Terminal Building with the new Midfield Satellite Concourse Building 1. The underground extension is approximately 700 metres long, and will be equipped with an automated people mover system and baggage handling system for greater connectivity between the two buildings.

In addition, the Company secured contracts for the supply, installation, testing and commissioning of air-conditioning & ventilation system, electrical & communication system, and sanitary & fire protection system at Mega Bangna Shopping Centre Plot H.

Mega Bangna is the first and one of the largest low-rise regional super-malls in Southeast Asia, while Plot H is its latest expansion and is located at the Bangna-Trad Road, Samutprakan. It is a 4-storey shopping centre with a 7-storey carpark building adjacent to it, occupying a total area of 58,824 square meters.



泰國怡和機器獲得曼谷國際機場擴建項目的工程合約，為其供應、安裝、測試和調試隧道通風、衛生及消防系統。

擴建工程包括將南隧道延伸以連接本部客運大樓及新建的中場衛星客運廊一號大樓。該延伸部份為長約700米的地下隧道，並將設置旅客捷運系統及行李處理系統，為旅客提供便捷的服務。

此外，公司亦取得Mega Bangna購物中心（H區）的合約，為其供應、安裝、測試和調試空調及通風系統、電子及通訊系統、以及衛生及消防系統。

Mega Bangna為東南亞首間及其其中一間最大型的城郊購物中心，而H區則為最新的擴建項目，坐落於北欖府邦納塔路。H區本部大樓樓高4層，毗鄰為7層高的停車場，佔地面積達58,824平方米。



JEC Philippines Awarded Full Facilities Maintenance Contract from FamilyMart

菲律賓怡和機器獲得FamilyMart的全面設備保養合約

JEC Philippines is going to provide full facilities maintenance service for FamilyMart in the Philippines. FamilyMart is the world's second largest convenience store operator which originated in Japan. With 90% of their stores situated in Metro Manila, FamilyMart also has a plan of opening 25 new stores for this year, targeting locations such as urban areas where there are rapid development, to mark its presence nationwide.

The full-year contract with FamilyMart will serve a total of 89 stores in Luzon. The scope routine covers equipment servicing and maintenance, including a 24-7 central helpdesk that renders assistance to all 89 stores. The collaboration within JEC Philippines has been the key to winning the Company's first full facility maintenance contract for a convenience store chain with multiple outlets in the country.

The operation and maintenance contract from Rustan's Supercenter Inc., preceded by FamilyMart, is reinforcing JEC Philippine's competence in providing full facilities management service to the retail industry, opening up opportunities to other businesses and sectors.

菲律賓怡和機器將為FamilyMart在菲律賓的分店提供全面的設備保養服務。創辦於日本的FamilyMart，是全球第二大便利店營運商；在菲律賓，9成FamilyMart便利店均位於馬尼拉。為了在菲律賓拓展全國性業務，今年FamilyMart計劃增設25間新店，選址多在發展迅速的市區。

根據FamilyMart簽訂的全年合約，菲律賓怡和機器將為其位於呂宋的89間分店提供設備保養及維修服務，當中包括可為全部分店提供全天候支援的中央求助台服務。有賴菲律賓怡和機器上下同心，使公司首次與在該國營運多家分店的便利店集團，簽訂全面的設備保養合約。

與FamilyMart合作前，菲律賓怡和機器已獲得Rustan's Supercenter Inc.的設備營運與保養合約，增強了公司向零售業提供全面設施管理服務的能力，得以在其他行業開拓商機。

JEC Philippines Equips Widus Hotel & Casino with MVAC System and LPG System

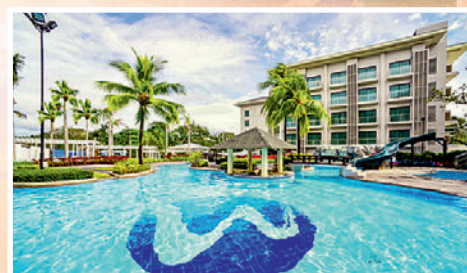
菲律賓怡和機器為Widus賭場酒店安裝機械通風及空調系統和石油氣系統

JEC Philippines was subcontracted to design, supply and install the mechanical ventilation & air-conditioning system and liquefied petroleum gas system for the 3rd Tower of Widus Hotel & Casino, one of the deluxe class hotels in Clark Freeport Zone of the Philippines.

The project, which commenced in April and covers a 16-storey hotel tower and a 3-storey podium with a basement, will be completed by the end of this year. The hotel will be opened to public in the 1st quarter of 2018.

菲律賓怡和機器獲得判商合約，為Widus賭場酒店的第3座酒店大樓設計、供應及安裝機械通風及空調系統和石油氣系統，該酒店是菲律賓克拉克自由港區內最豪華的酒店之一。

工程於今年4月起展開並預計於年底完成，其範圍包括16層高的酒店大樓和3層高的平台連地庫。酒店定於2018年首季開幕。



JEC Thailand Honored to Co-host the Royal Funeral Rite of His Majesty Late King Bhumibol Adulyadej

泰國怡和機器榮獲邀請協辦已故泰王普密蓬·阿杜德的皇家葬禮儀式

Royal permission was granted to JEC Thailand to be one of the co-hosts of the royal funeral rites of His Majesty Late King Bhumibol Adulyadej. On 24th March 2017, 50 executives and staff from JEC Thailand were honored to attend the Ceremony at Chakkri Maha Prasat Throne Hall in the Grand Palace to show contemplation of the royal grace. The Company also made a donation of 100,000 Baht to the Bureau of The Royal Household to support the Royal Charity and His Majesty's development projects.

泰國怡和機器榮獲王室譽可協辦已故泰王普密蓬·阿杜德的皇家葬禮儀式。在2017年3月24日，50位行政人員及同事很榮幸能夠一同出席假曼谷大皇宮節基皇殿舉行的儀式，向已故泰王作深切哀悼。泰國怡和機器另外亦捐獻了10萬泰銖予泰國王室宮務處，以支持王室慈善機構和已故泰王在位期間一直推動的發展項目。



Jardine Distribution, Inc. Continues to Partner with Filipino Farmers to Improve Livelihood

JDI持續協助菲律賓農民改善生活

Staying true to its pledge of partnering with Filipino farmers, Jardine Distribution, Inc. (JDI) helped farmers to regain their farming livelihood and to learn more about climate change during a JDI Farmer's Seminar this January, at the Macagang Business Center in Nabua, Camarines Sur of The Philippines.

Its Agro Products Division supported over 116 farmers across eight areas along the provinces of Camarines Sur to Albay. These farmers were greatly affected by Typhoon Nina which devastated the infrastructures, rice and corn farmlands.

"We have provided farmers with starter packs – US-88 hybrid rice seeds, Seminis sweet corn and eggplant seeds. The pack also contains complementing farm inputs. Apart from the starter pack, we have also provided updates on climate change and information on disaster preparedness to our Filipino farmers, to ensure that they can rebuild their agricultural livelihoods." said Mr. Angelo Abejero, Product Manager, Argo Products Division.

Jardine Distribution, Inc. (JDI) 貫徹履行對菲律賓農民的承諾，於今年1月舉辦了農民研討會，協助當地農民恢復生計並教授他們有關氣候變化的知識。研討會於南甘馬奔省Nabua市的Macagang商業中心舉行。

超過116位農民獲得JDI農產品部的援助，他們均來自南甘馬奔省至阿爾拜省內8個地區，去年超強颱風洛坦將他們的基礎設施、稻田和粟米田摧毀。

產品經理Angelo Abejero表示：「我們向農民提供種子包，內有US-88的雜交水稻種子和Seminis的甜粟和茄子種子，以及其他開耕所需的物資。除了種子包外，我們亦向農民提供最新的氣候變化和防災資訊，確保他們能夠恢復生產，重拾生計。」



JEC Promotes Green Building Solutions in WSBE 2017

怡和機器於2017年度可持續建築環境全球會議推廣綠色建築方案

JEC was one of the Silver Sponsors for the World Sustainable Built Environment Conference (WSBE) 2017, regarded as the "Olympics" for the green building industry, which was jointly presented by the Construction Industry Council and the Hong Kong Green Building Council and held on 5th- 7th June at the Hong Kong Exhibition and Convention Centre. Themed "Transforming Our Built Environment through Innovation and Integration: Putting Ideas into Action", the Conference brought together 1,800 green building advocates, policy-makers, academics, and industry practitioners from all over the world.

Our table-top space showcased green building solutions in different aspects, including Renewable Energy, Indoor Air Quality, Water Saving, Energy Efficiency, E&M Facilities Management and Retrofits Services. Through participating in this international event, it provides us a unique opportunity to further promote our green offerings to the target audience.

怡和機器於6月5至7日參與了於香港會議展覽中心舉行的2017年度可持續建築環境全球會議。這個堪比為可持續建築界的奧運會的國際盛事由建造業議會及香港綠色建築議會一同籌備，而會議的命題為「建築環境變革：創新、融合、實踐」，今屆吸引了1,800位來自世界各地的倡議綠色建築的人士、決策人員、學者及業界人士到場參與。

我們的攤位展示了多項綠色建築方案，包括可再生能源、室內空氣質素、用水效益、能源效益、機電設施管理及翻新服務。參加是次國際活動正好為怡和機器提供一個平台，向本地及海外機構宣傳及推廣我們的綠色建築方案。



JEC Spring Dinner 2017

2017年度怡和機器周年晚宴

On 3rd March 2017, more than 1,300 colleagues and guests gathered at the Star Hall of KITEC for our JEC Spring Dinner. The theme of this year's dinner was "JEC Fantasy Studio". Our management and a team of Hong Kong colleagues showcased racy performances on stage in Hollywood movie character costumes, adding a burst of colour to this eventful annual occasion.

2017年3月3日，超過1,300名同事和嘉賓齊集九龍灣國際展貿中心「匯星」，出席怡和機器的周年晚宴。今年我們以「怡和機器夢工場」為主題，管理層及一眾香港同事更化身成荷李活電影人物，帶來精彩的舞台表演，為晚宴錦上添花！



PRODUCT SOLUTIONS

Finishing Well – Building Products that Signify Class and Deliver Quality

裝潢得體—彰顯格調和品質的建築產品

The fittings and fixtures that people touch, walk on, and see around them define their experience of a building. Investment is necessary for the floorplan, construction or renovation, back-end systems and utilities which create the productive operating environment. Here is a selection of high-quality fittings and fixtures available from JEC to enhance any build-out or premises renovation.

人們對一棟建築物的觀感，往往受到建築物內部的裝潢及設備帶來的視覺和觸覺體驗所影響。要建立一個具生產力的作業環境，需要投資於建築設計、興建或翻新工程、後端支援系統以至各種設施上。以下是怡和機器的優質建築產品精選，可用於提升裝潢或建築物翻新的效果。



特色 Features

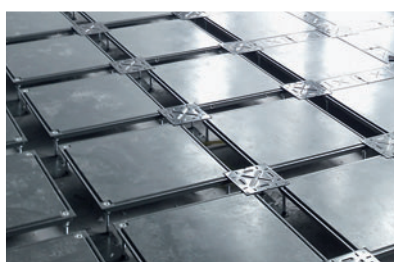
- A range of loading options and height selections to allow maximum indoor headroom
- Improved cable management
- Performance specifications meet Hong Kong Laboratory Accreditation Scheme standards

- 備有各種載重和高度選擇，將室內的通行高度提升至最高
- 有助改良佈線設計
- 性能規格符合香港實驗所認可計劃的標準

高架地台 Raised Floors

Manufactured by JEC, **Elitefloor** offers various types of raised floor products including calcium sulphate infill, lightweight cementitious and high pressure laminated panels which are suitable for office, institutional and data centre environments.

怡和機器自家品牌「怡麗」提供多種通路地台產品，包括硫酸鈣地板、輕質水泥地板和高壓防火膠板地板，適用於辦公室、各類機構和數據中心。



特色 Features

- Environmentally friendly: certified under LEED and Carpet and Rug Institute IAQ Green Label Plus
- Unique inkjet printing technology delivers colourful and exciting floor covering designs for commercial environments
- All carpets come with PVC-free cushion backing to enhance underfoot comfort and user health

- 獲環保認證：取得領先能源與環境設計（LEED）認證及美國地毯工業協會室內空氣質素綠色標誌
- 採用獨家噴墨打印技術，打印出色彩鮮艷和時尚新穎的地毯圖案
- 各款地毯配備不含聚氯乙烯（PVC）的軟墊，可令足底感覺更舒適，並保障健康



照明 Lighting



JEC offers a variety of **Eterlite** LED lighting products, tailored for building functions including office space, toilets, meeting rooms and entrances. The product mix includes T8/T5 sensor tube, passive infrared sensor batten, microwave sensor batten, photoelectric sensor batten, dimmable LED panel, LED downlight, LED light bulb and spotlight.

怡和機器供應一系列**Eterlite**的LED照明產品，適合不同功能的室內場所，如辦公室、洗手間、會議室和出入口等。產品組合包括T8/T5感應光管、被動式紅外線感應層板燈、微波感應層板燈、光電感應層板燈、可控光暗LED板燈、LED天花射燈、LED燈膽及聚光燈。

地毯 Carpet

Pioneering and environmentally responsible carbon negative **Milliken** carpet is manufactured in both the United States and China, and represented exclusively in Hong Kong and Macau by JEC.

創新又環保的**Milliken**碳負性地毯於美國及中國製造，在港澳地區由怡和機器獨家代理。



自動門系統 Automatic Door Systems

High-performance **Nabco** sliding entrance systems, including framed sliding doors and all-glass sliding doors, create elegant, reliable, secure entrances.

功能卓越的**Nabco**自動趟門系統，包括有框趟門和全玻璃趟門，打造優雅、可靠和安全的出入口。



特色 Features

- European safety standard-compliant sensor system for power-operated pedestrian doors assures reliable and safe door operation
- Motorised belt-driven for silent operation
- Allows a larger and clearer viewing area for impressive modern entrances

- 行人自動門配置符合歐洲國家標準的感應器系統，保證運作安全可靠
- 由電動履帶驅動，操作寧靜
- 能提供更大和更清晰的視野，使出入口更顯氣派

特色 Features

- Smooth, hygienic, barrier-free entry and exit
- Built-in, configurable power mode from full power to low energy

- 提供運作流暢、衛生和無障礙的出入口
- 內置從高動力到省電的耗能模式



Automatic swing operators by **Gilgen** are designed for quiet and long-life operation of internal doors to heavyweight external doors with door weight up to 250kg.

Gilgen的自動門門鉸能夠寧靜及長時間運作，適用安裝於室內自動門以至承重高達250公斤的室外自動門。

ENVIRONMENTAL, HEALTH & SAFETY

環境、健康與安全

Safety First! Our Commitment to Achieve “Vision Zero”

安全第一！ 對「零意外」的追求與實踐

All of you should be aware of this famous quote – “Safety First”, which means we have to always stay alert of unnecessary risks for keeping us safe. Most of the organisations may have developed policies, and some may have allocated sufficient resources and manpower to promote safety but the workers are still at risks. Some management apparently have put operations and production cost above safety, which is unfavourable for building a safety culture at work.

「安全第一」這句口號家傳戶曉，大家不會陌生，它提醒我們要時刻對不必要的風險保持警惕，以策安全。大部份機構均有制定職業安全政策，部分亦會投放充足的資源和人手推廣職業安全，可是意外仍時有發生。有些企業的管理層側重營運與生產成本多於安全，這樣有礙建立安全文化。

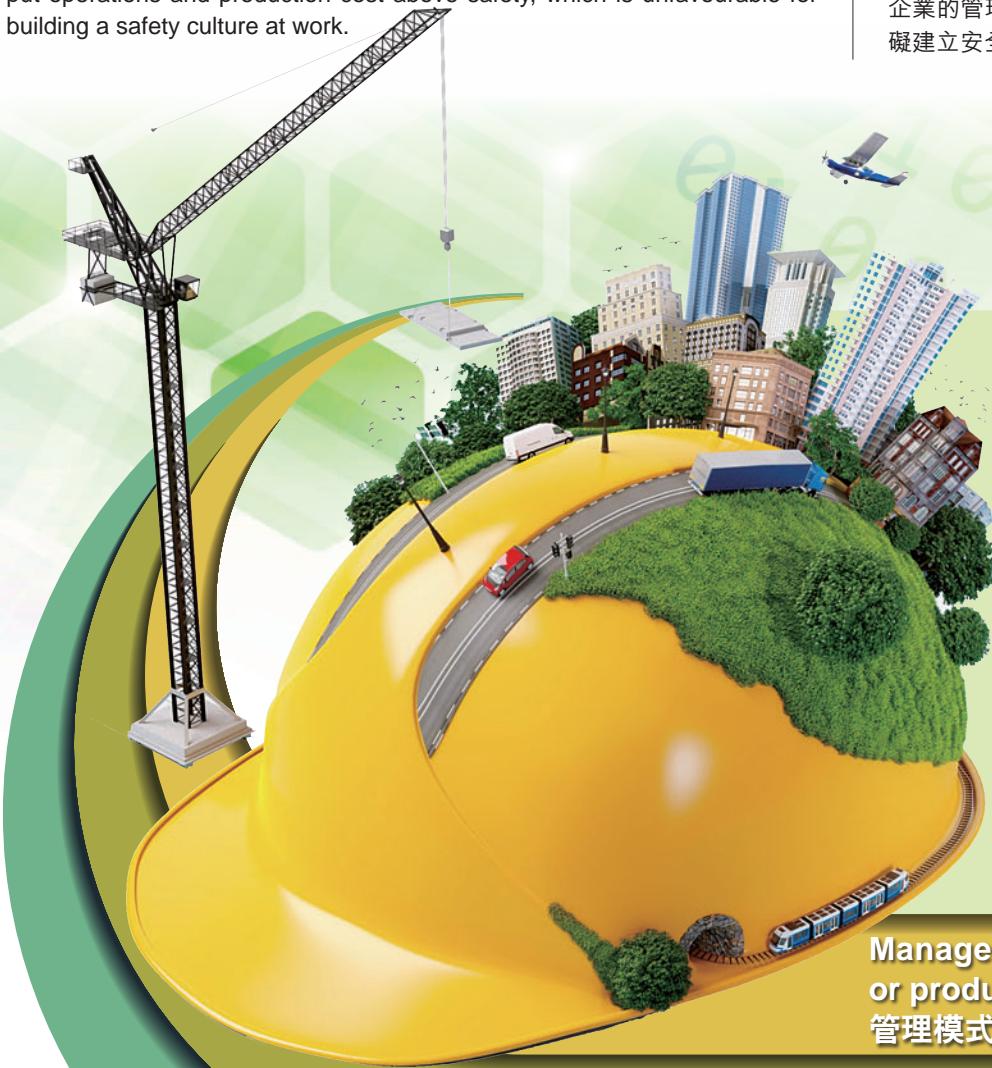
Many people perceive a "Safety Culture" as a rule or regulation for employees and workers to follow for a safe environment at work and during non-working hours. However, there are other factors affecting the "Safety Culture":

很多人認為「安全文化」是一套關於安全工作環境的規則或規定，讓僱員和工人在工作以至公餘時間有所遵從。不過，「安全文化」還會受到其他因素影響，包括：

Management style – put operations or production over safety
管理模式—側重營運或生產多於安全

Unfavorable safety management system and complicated procedures
不理想的安全管理系統和繁複的程序

Limited resources in workforce, plants and equipment
人手短缺、機器及設備有限



In JEC, we are committed to "Safety First" through a responsible leadership, effective systems, sufficient training programmes and consistent processes.

Our Heads of Operating Business Units are supportive in providing resources as required to assure safety at work. They hold themselves accountable for the commitment of safety, with yearly performance ratings, performance bonuses and future career opportunities tied with good performance in demonstrating Environmental Health & Safety standards. Managers and Supervisors work hand-in-hand with the management to promote the safety culture. We set objectives on safety and communicate with the employees in a regular basis. Our Engineers and Supervisors are empowered to make decisions and take necessary actions to meet our safety objectives, regardless of the need to cease the work for immediate investigation and remedy, issue warnings or terminate the work due to repeated unsafe acts. We don't just talk about "Safety First", we act and live with it, even if our Company profit would need to be sacrificed.

Moreover, we have created a welcoming environment which employees can freely make suggestions or comments on health and safety issues, and we encourage staff to recognise peers who have demonstrated a good safety culture.

JEC has a good track record of safety; however there is always room for improvement and no room for complacency. We all have the responsibility to ensure our safety by complying with the rules and regulations. We work hand-in-hand with business partners and customers to achieve their safety objectives, while JEC has to also count on the employees, suppliers and sub-contractors to help the company achieve "Vision Zero". By cultivating the right attitude through well-established policies and systems, and the commitment by the management, JEC can sustain a high standard of safety and health at work.

Let's work together to ensure everyone works safely and goes home safe!

怡和機器透過責任管理、有效的系統、充足的培訓和一致的處理程序，堅守「安全第一」的原則。

各個業務營運部門的管理層，均致力提供所需資源以確保員工的工作安全，並對此完全負責，因此他們在維持環境、健康與安全標準的表現，會與其年度表現評估、所得花紅及未來的晉升機會掛勾。至於各級經理和主管，亦會與管理層攜手推廣安全文化，包括制訂安全目標和定期與員工溝通，而工程師和監督人員亦獲得授權，可以就攸關安全目標的事項作出決定並採取必要行動，包括即時停工以作調查和糾正，或就重覆的不安全行為提出警告並中止工序。此外，即使有需要犧牲公司的利益，我們仍然會堅守「安全第一」的原則，並以行動實踐，絕非空話。

再者，我們亦歡迎員工就健康與安全的問題提出意見及建議，並鼓勵他們學習及表揚同事們的好榜樣。

儘管怡和機器擁有良好的安全紀錄，我們還是有進步的空間，不容自滿。所有人都有責任遵守規則，以保障自身的安全。我們的業務夥伴和客戶有賴於怡和機器協助他們在工程項目上達到安全目標；同樣地，怡和機器亦需要得到員工、供應商及次承判商的協助，以實現「零意外」的目標。憑藉管理層的決心，加上完善的政策和制度，正確的安全工作態度得以植根於集團上下，使怡和機器的職安健表現一直能夠維持在高水平。

讓我們一起努力，確保所有員工都可以安全工作，平安回家！

TRAINING & DEVELOPMENT



JEC Pledges Support Towards "Innovate Jardines" Business Challenge

怡和機器響應怡和集團「Innovate Jardines」計劃的業務挑戰

Innovate Jardines is a Group-wide initiative designed to inspire a culture of innovation within the Jardine Matheson Group's businesses, and seek out new ideas and initiatives that could change the way we work. Apart from offering an internet platform for everyone within the Group to get inspired, share innovation initiatives and best practices, and collaborate with one another, it also hosts theme-based series of business challenges designed to allow every colleague to put forward creative ideas and solutions.

One of the latest business challenges is "The Future of Work", which all employees across the Group were invited to propose innovative ideas to transform the way certain tasks are done today, leveraging the latest technology so that it increases our productivity and allows us to focus on the most meaningful aspects of our job.

In response to this challenge, a team of six JEC's 2015 Management Trainees came up with the idea of developing an internal mobile app "J-Easy: An easy app for JEC staff" (J-Easy) for our employees to enhance their work outside the office and facilitate communication between office and non-office colleagues. This idea was selected as the top 20 amongst over 6,500 ideas submitted from within the Jardine Matheson Group, ie. it is amongst the best 0.3% ideas.

To help these top 20 teams on developing their proposals and design thinking, employee experience and relevant technology, Innovate

Jardines是怡和集團向成員公司推行的一項計劃，旨在激發集團內部的創新文化，並發掘能夠改善我們工作方式的嶄新構思和做法。除了為員工提供一個可供汲取靈感、分享創新想法和最佳實踐，以及增進相互合作的網上平台外，Innovate Jardines還會提出一系列主題式業務挑戰，讓每位員工都有機會提出創新的構思和方案。

其中一項最新的挑戰賽主題為「The Future of Work」，邀請所有員工就改革現時的工作流程提出創新構思，利用最新科技以提升生產力，使大家能夠專注於工作上最具意義的部分。

在這項比賽中，由6位怡和機器2015年管理培訓生組成的隊伍提出了研發手機應用程式「J-Easy: An easy app for JEC staff」(J-Easy)的構思。這個應用程式專為內部通訊而設，旨在提升員工在外工作的效率，並方便身處辦公室的同事與外勤人員保持聯繫。「J-Easy」在6,500個參賽構思中脫穎而出躋身20強，換言之是當中0.3%最出色的構思之一。

為協助20支入圍隊伍實踐提案及強化設計思維、汲取經驗和研發相關科技，Innovate Jardines於2017年3月27至31日安排了一個為期5日的集訓營。入營

Jardines organised a 5-day Bootcamp on 27th -31st March 2017. In the boot camp, the creative idea-generators sat together with various subject matter experts and management consultants, and had fruitful exchanges on best practices, ideas and thoughts to further fine-tune the ideas.

期間，各隊伍與不同範疇的專家及管理顧問，互相就最佳實踐、各種構思和想法進行交流，使他們能夠進一步完善其提案。

The J-Easy team members include: 「J-Easy」項目的團隊成員包括：

- Adrian Chan 陳海根
- Brian Wong 黃日東
- Christabel Wai 韋海茵
- Gary Lai 黎明駿
- Chiu Ka-yu 趙嘉愉
- Matthew Ma 馬子軒



“ In the boot camp, I learnt to analyse issues from a broader perspective, in order to come up with the best solutions. ”
在集訓營裏，我學會從更深的角度進行分析，從而整合出最佳的方案。 ”
- Brian 黃日東

“ The coaching from this boot camp helped us design a better mobile apps for our colleagues. ”
這次集訓營的指導，有助我們為同事設計更好的手機應用程式。 ”
- Adrian 陳海根

“ It was a fantastic experience to meet other idea-generators from within the Jardine Matheson Group. Their ideas greatly broadened my horizons! ”
能夠與集團內其他提出新構思的人交流，實在是很棒的經驗。他們的想法大大擴闊了我的視野！ ”
- Ka-yu 趙嘉愉

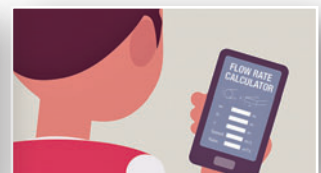
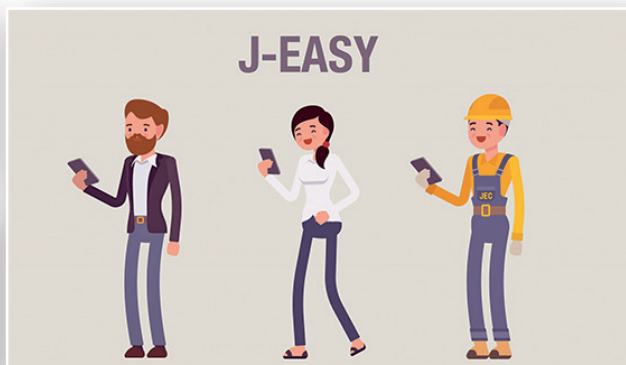
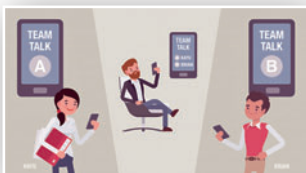
One of the key tools introduced to the Bootcamp participants helped them analyse in details the needs and wants of the target users – mostly the front-line employees who rarely have access to computers when at work. With the analysis, the J-Easy development team is now able to develop functions that are most relevant to the users. Another key tool helped the team identify the most essential elements of the apps for most users, so the team can focus their efforts to delivering a Minimum Viable Product during the initial launch. To finalise their idea development, the team had to put their ideas against a business model canvas outlining the critical elements of a business model, such as cost and benefit analysis, time, resources and operational considerations, etc. Critically reviewing these issues helped the team further fine-tune the idea to a more realistic business plan.

Through the Bootcamp, the J-Easy team members who would soon be graduating from their 2-year Management Trainee Programme, were able to gain insights on how to develop a realistic business plan effectively, which helps them put their knowledge into practice at work.

他們在集訓營中認識了一些重要工具，其中一種有助詳細分析目標用戶的需要和想法——「J-Easy」的目標用戶大部分是前綫員工，工作時甚少使用電腦。藉着分析，「J-Easy」項目團隊現在能設定最切合用戶需要的功能。還有另外一種工具可識別一個應用程式中哪些元素，對於大多數用戶而言至為必要，讓團隊得以集中火力研發最能實踐的基本產品，可以在早期推行。為了把構思定案，他們還需要將概念轉化為商業模式圖，勾劃出商業模式的重要元素，如成本和收益分析、時間、資源和實行方法等，仔細分析這些因素有助團隊優化構思，使之更接近真實的商業計劃。

「J-Easy」項目團隊快將完成為期兩年的管理培訓生計劃；透過集訓營，團隊了解到如何有效地擬定真實的商業計劃，有助他們在日後的工作中學以致用。

J-Easy means Easy Manage, Easy Learning and Easy Work for JEC employees 對怡和機器的員工而言，「J-Easy」代表「管理易」、「學習易」和「工作易」。



COMMUNITY CARE

Walk Up Jardine House 2017

2017「齊步上怡廈」

JEC participated in the annual fundraising event "Walk Up Jardine House" on 19th March 2017 as one of the major sponsors. JEC formed a team of 5 colleagues to compete in the Jardine Matheson Group Men's Team Relay, including Tang Wai Lun from Maintenance & Renovation and four 2015 Management Trainees Adrian Chan, Billy Chan, Matthew Ma and Vincent Tam, who paid efforts in conquering the 49 storeys of Jardine House in 4 minutes and 23 seconds. The team ranked fourth in the race.



This year the event raised HK\$3 million for MINDSET, a registered charity established by the Jardine Matheson Group whose goal is to make a real difference in the area of mental health.



2017年3月19日，怡和機器參與了一年一度的「齊步上怡廈」活動。作為主要贊助商之一，怡和機器派出由五位同事組成的隊伍參加男子團體（怡和集團）接力賽，分別是保養及維修部同事鄧偉倫以及四名2015年管理培訓生陳海根、陳嘉駿、馬子軒及譚穎聰。5位同事幹勁十足，最終以4分23秒跑畢怡和大廈49層樓梯，於該分組賽事中位列第四。

今年活動為「思健」籌得合共港幣300萬元善款。「思健」是由怡和集團成立的註冊慈善組織，以提倡精神健康為目標。

Discover Hong Kong's Living History on Tramways

「遊電車河」尋找香港歷史足跡

On 29th April, JEC's Caring Team organised a special sightseeing tour on a classic tram for a group of local and ethnic minority children from the Shek Kip Mei Centre of Chinese YMCA of Hong Kong.

18 children and six JEC volunteers first began their tour at Whitty Street Tram Depot, the tram then passed through Sheung Wan, Central, Admiralty and Wan Chai Districts where the children were briefed about the history of tramway system and the cultures of the districts along the route.

This was a valuable chance for children to discover the precious living history of Hong Kong Island by participating in a fun-filled tour on a classic tram.

4月29日，怡和機器愛心大使坐上傳統電車，為來自香港中華基督教青年會石硤尾會所的本地及少數族裔兒童，組織了一次特別的文化導賞團。

當日18位兒童和6位怡和機器愛心大使在屈地街電車廠出發，途經上環、中環、金鐘及灣仔等區，在旅程中導賞員為兒童講解了電車系統的歷史及沿途各區的文化。

這次活動是一個寶貴的學習機會，讓兒童能在電車上參與趣味十足的互動課堂，探索港島區珍貴的生活及文化歷史。



MAJOR CONTRACTS LISTING

Hong Kong	
14-39 King Wah Road, North Point	Supply of active chilled beam and induction VAV and automatic tube cleaning system
Caritas Centre	Maintenance services for pneumatic tube system
Cathay Pacific Catering Services Ltd	Maintenance services for HVAC plant
Central Police Station	Supply of ironmongery
Central-Wanchai Bypass Tunnel Building	Supply and installation metal door, glass door and raised flooring
	Supply and installation of diesel genset system
	Supply and installation of ELV systems and fire services system
Centre of Excellence in Paediatrics	Design, supply and installation of building maintenance unit and pneumatic tube
	Supply of central battery system
	Supply and installation of automatic door system
	Supply of LED exit sign
CFC Tower, Tsim Sha Tsui	Design and build contract of new air cooled chillers installation
China Mobile Data Centre Expansion	Supply and installation of diesel genset system
China Resources Headquarters	Supply and installation of diesel genset system
Chinese University of Hong Kong	Supply and installation of building maintenance unit and pneumatic tube system at medical centre
City Garden	Supply and replacement of sea water cooled chiller
City One Shatin	Supply of LED lightings
City University of Hong Kong	Supply and installation of diesel genset system
Cityplaza Three	Fitting out offices with combined building service installation
CLP Castle Peak Power Station	Replacement of A/C (chilled water) plant system
CMI China Mobile Data Center at TKO	Supply and installation of diesel genset system
Commercial Development at Wang Chiu Road and Lam Lee Street, Kowloon Bay	Supply and installation of diesel genset system
EMSD Headquarters Building	Supply of 'Flamebar' fire resistant duckwork
Equinix Data Centre HK2-IV	Supply of LED sensor tubes with batten
Equinix Data Centre HK1	Supply and installation of cooling tower
	Supply of automatic tube cleaning system and valves
	Supply and installation of FS system
	Electrical installation - power supply upgrade works
	FSID work for Tower 1, 2 and 3
	MVAC work for FSID
Exchange Square	One and Two Exchange Square public area renovation at Central, Hong Kong Circulation, 3/F lobbies and Rotunda, and 4/F restaurant balcony
	Supply of LED lightings, valves and pumps
	Tower 1 and 2 lift lobbies renovation and FS renovation
FEHD Environmental Hygiene Offices-cum-Vehicle Depot	ASD Contract No. SS D505 - building maintenance unit for reprovisioning of FEHD Sai Yee Street Environmental Hygiene Offices-cum-Vehicle Depot at Yen Ming Road
Fire Services Training School, Tsung Kwan O	Supply and installation of steel doors and supply of ironmongery
Fortune Pharmaceutical New Factory Development	Supply of central battery system and valves
Global Switch Hong Kong 1	Supply and installation of dummy loadbank for diesel genset system
Global Switch Hong Kong 2	Design, supply and installation of lifting platform and dock leveler
Goldin Financial Global Centre	Supply and installation of diesel genset system, PV panel, cooling tower and supply of pumps and valves
Grade A Office Development at 348 Kwun Tong Road	Supply of cooling tower, HVAC pumps and fire pumps
Grandtech Centre	Supply and installation of raised floor
Hactl	Supply of LED high-bay and LED tubes
Hanford Commercial Centre	10-year FS maintenance contract on dry fire
Harmony Redevelopment at Hysan Avenue	Conversion of water-cooled chiller plant
Haven of Hope Hospital	Supply and installation of diesel genset system
HKEEx Data Centre	Supply of fire resistant ductwork, VRF air-conditioning system and vibration isolator
	Supply and installation of diesel genset system
	Term maintenance contract of MEP installations
	Supply and installation of dock leveler and weighbridge
	Supply and installation of lifting appliances at road section between Scenic Hill and Hong Kong Boundary Crossing Facilities
Hong Kong-Zhuhai-Macao Bridge	Supply and installation of smoke curtain
	Supply of central battery system
	Supply of ironmongery for PCB façade package
Hong Kong-Zhuhai-Macao - Hong Kong Boundary Crossing Facilities Vehicle Clearance Plazas and Ancillary Building and Facilities	Supply and installation of diesel genset system and PV panel
Home Ownership Scheme Development at Sha Tsui Road, Ex-Tai Wo Hau Factory Estate, and Ching Hong Road, Tsing Yi	Supply and installation of PV system, smart metering system and information display system
Hong Kong Electric (Contract No. 15/9024)	Supply and commissioning of mobile gas turbine genset
	Contract P568 supply and installation of diesel genset system
	Design, supply and replacement of programmable logic controllers and associated input/output modules for baggage handling system (phase 2)
	Design, supply, installation, testing and commissioning of baggage handling system for arrival bags delivery and early bags storage at Terminal 1
	Enhancement of lighting and ventilation system at baggage hall of Terminal 1
Hong Kong International Airport	Maintenance services for automatic sortation systems of baggage handling system
	Maintenance services for conveyor systems of baggage handling system
	Maintenance, improvement and refurbishment works for baggage trolley mechanical recirculation systems
	Maintenance, improvement and refurbishment works for electrical and mechanical systems at Midfield Concourse and North Satellite Concourse
	Provision of static VAR generator for sortation system of baggage handling system
	Replacement of emergency stop pushbuttons in baggage handling system at Terminal 1
	Supply and installation of metal design ceiling at Midfield
Hong Kong Jockey Club	Supply and installation of filtration system for Olympic Equine Pool
Hong Kong Ocean Park	Ocean Park Tai Shue Wan Water World Project water filtration system
Hong Kong Ocean Park Marriott Hotel	Aquarium and all associated works, and supply and installation of swimming pool filtration system
	Supply of cooling tower, pumps and valves
Hong Kong Science Park	Supply and installation of LED lightings
HSBC Main Building, HMB Project Bridge II	Supply and installation of fuel system
I Tech Data Centre Phase 2	Supply and installation of diesel genset system
Jubilee Garden	Supply and installation of LED lightings
Kai Tak District Cooling Project Phase 3 & 3B	Supply of seawater pumps
Kai Tak Nullah Reconstruction and Upgrading	Supply and installation of stoplogs
Kennedy Town Swimming Pool (Phase II)	Supply and installation of swimming pool filtration system
Lai Chi Kok Park Swimming Pool	Replacement of boilers and associated pipework system
	FSID work
Landmark, Central	MVAC and electrical work for toilet renovation
	MVAC work for FSID

Liantang / Heung Yuen Wai Boundary Control Point Building	Design, supply and installation of building maintenance unit for building and associated facilities project Design, supply and installation of sewage treatment plant Supply and installation of diesel genset system Supply of central battery system, ironmongery, cooling tower, centrifugal separator, automatic tube cleaning system, VRF air-conditioning system and D.O. system
Luk Hop Industrial Building	Supply and installation of LED lightings
M+ Museum at West Kowloon Cultural District	Supply and installation of smoke curtain system and diesel genset system
Maxim's Office Building	Supply of ironmongery, pumps and valves Supply and installation of carpet tiles
MTR Corporation	Building management system installation and modification for East Rail Line station control room in Tai Wo, Fanling and Sheung Shui stations Chiller plant replacement for Wanchai station Design, supply and installation of electrical works, fire services, pumps and drains, swimming pool filtration system and supply of ironmongery for the reprovision of Harbour Road Sports Centre and Wan Chai Swimming Pool Mobile lifting jack in Pat Heung Depot Replacement of underfloor wheel lathe at Ho Tung Lau Depot SCL Contract 1122 - building services for Admiralty South Overrun Tunnel SCL Contract 1191 - floodgate system for Shatin to Central Link Phase 2 Supply and installation of access cover for South Island Line (East) Supply and installation of LED lighting at Coastal Skyline Supply and installation of LED motion sensor tubes and emergency battery kits at Sorrento and Tung Chung Crescent Supply and installation of LED motion sensor tubes with emergency battery kits and LED downlights at The Arch Supply and installation of steel door and frames for Shatin to Central Link Supply and installation of stoplogs for 810B West Kowloon Terminus station south Supply and replacement of AFA system for Hong Kong and Kowloon stations Supply and replacement of split type air-conditioning units at Harbour Green Supply of cooling tower for SCL Contract 1164 Diamond Hill station Supply of cooling tower, water pumps and valves for SCL Contract 1173 Hung Hom station Supply of fire pumps and cooling tower for Shatin to Central Link Supply of 'Flamebar' fire resistant ductwork at SCL Contract 1177 Ma Tau Wai station and ancillary building Supply of 'Flamebar' fire resistant ductwork for Express Rail Link Supply of metal door and ironmongery at Tin Shui Wai station
Mui Wo Sewage Treatment Works	Supply and installation of the lifting appliances
Murray Building Hotel Development	Supply and installation of building maintenance unit Supply and installation of diesel genset system Supply and installation of filtration system for indoor swimming pool Supply of PHI air purifier Supply of pumps and fire resistant ductwork, fire pumps and central battery system
New World Centre	Supply and installation of smoke curtain
NTT Data Centre (FDC2-EXP-001)	Supply of valves, fire pumps, fire resistant ductwork
NTT Data Centre at Tai Po	Supply and installation of diesel genset system
NTT Data Centre at TKO Wonder 9 (EXP-002)	Supply and installation of diesel genset system
Office Development at 1 Hennessy Road, Wanchai	Supply and installation of diesel genset system
Office Development at NKIL 6311 at Kowloon Bay	Supply and installation of vehicle turntable
Organic Waste Treatment Facilities Phase 1	Supply of air duct flange system
Pacific Place	Supply of absorption chiller
Peninsula Centre	Replacement of high tension chillers
Prince's Building and Alexandra House	Supply and installation of LED lightings
Public Library and Indoor Recreation Centre in Area 3, Yuen Long	Electrical installation - power supply upgrade works
Public Rental Housing Development at Fo Tan Phase 1 & 2	Supply and installation of steel doors and supply of ironmongery
Public Rental Housing Development at Choi Yuen Road	Supply and installation of diesel genset system
Public Rental Housing Development at Tuen Mun Area 54 Site 2 Phase 1 & 2	Supply and installation of diesel genset system MVAC installation Supply of centrifugal separator
Queen Elizabeth Hospital	Pneumatic tube transportation system integration works at Yau Mai Tei Specialist Clinic and extension to Block R Supply of cooling tower and valves
Residential Development at Deep Water Bay Drive	Supply and installation of swimming pool filtration system
Residential Development at Kai Tak	Supply and installation of diesel genset system
Residential Development at Ngau Tam Mei	Supply and installation of swimming pool filtration system
Sai Kung Hotel	Supply and installation of linen chute, vertical lifting platform and vehicle turntable
Sewage Pumping Station for Tung Chung Housing	Supply and installation of E&M equipment for sewage pumping station
Shangri-La Hotel, Hung Hom	Supply and installation of Exterpark outdoor decking Supply of pumps
Shatin and Sai Kung Sewage Treatment Works and Pumping Station	Overhaul and testing of electrical and mechanical equipment of sewage treatment plant and pumping station
Shek Wu Hui Sewage Treatment Works	Provision of electrical and mechanical facilities for further expansion phase 1A - advance works and Ng Chow South Road Sewage Pumping Station Supply of diffuser aeration system
Sheung Shui Water Treatment Works	Improvement of dewatering plant
Shum Wan Laundry of Queen Mary Hospital	Sale of used laundry equipment
South Horizons	Supply and installation of LED lightings Supply of LED light bulb and lighting fixture
Sun Yuen Long Centre	Replacement of chilled water pumps
Tai Po Water Treatment Works	Supply of cooling tower, granular activated carbon
Taikoo Place 2A Redevelopment	Supply of pumps and valves
Telford Plaza II	Supply and replacement of chillers
THEi New Campus VTC at Chai Wan	Supply and installation of cooling tower and carpet tiles, and supply of valves and ironmongery
Tin Shui Wai Hospital	Design, supply and installation of pneumatic tube system, and supply of pumps, air quality products and central battery system
TKO Gateway and Tin Chak Shopping Centre	Supply and installation of VSD for chilled water pump
TKO Town Lot 93	Supply and installation of diesel genset system
To Kwa Wan Preliminary Treatment Works	Provision of electrical and mechanical equipment for detritor No. 1 and 2
Tsuen Wan 5 Bayside	Supply of valves
Tuen Mun Western Trunk Sewerage Tunnel	Supply and installation of stoplogs
Union Hospital, Shatin	Supply and installation of pneumatic tube system
Various Health Care Venues in NTE	Provision of split type A/C and VRV
Water Supplies Department Regional Office	Design, supply and installation of grey water and rainwater recycling plant
Wellcome & Mannings Various Stores at HK, Kowloon and NT	MVAC repair and maintenance services for various stores (2016 - 2018)
Wellcome Supermarket, Leung King 2	MVAC works
Wellcome Supermarket, Port Centre	MVAC works
Wellcome Supermarket, Tin Tsz 2	MVAC works
West Kowloon Government Office at Yau Ma Tei	Design, supply and installation of building maintenance unit Supply and installation of diesel genset system Supply and installation of raised floor Supply of central battery system
West Rail Nam Cheong Station Pty Development	Supply and installation of swimming pool filtration system
WF Joseph Lee Primary School	Supply and installation of swimming pool filtration system
Wing On House	Upgrading of sea water system
World-Wide House, Central	Replacement of water-cooled chiller
XiQu Centre	Supply and installation of smoke curtain system and timber doors

Macau	
Junior Court of Law	Supply of central battery system
Lisboa Palace	Supply of 'Flamebar' fire resistant ductwork and valves
Louis XIII Hotel	Supply and installation of genset systems and supply of valve
Macau Light Rail Transit	Design and supply for painting booth Supply and installation of lifting appliance
MGM Cotai	Supply and installation of cooling tower, smoke guard, and supply of pumps and valves Supply of floor drains and bathtubs
MGM Grand Paradise	Design, supply and installation of building maintenance unit and turntable Supply and installation of smoke guard system
SJM Hotel at Cotai	Supply of valves
St. Regis, Venetian Macau, Parcel 5B	Supply of ironmongery and sanitaryware Supply and installation of diesel genset system
Venetian Cotai P3	Supply of ironmongery and sanitaryware Supply of valves, and fire resistant ductwork
Thailand	
BITEC 2 & BHIRAJ TOWER at BITEC	Supply, installation, testing and commissioning of air-conditioning and ventilation system, electrical and communication system, sanitary and fire protection system
Chartrium Hotel Pathumwan	Supply, installation, testing and commissioning of electrical and communication system and fire protection system
CP Leadership Development Center Nakhon Ratchasima	Supply and installation of air-conditioning and ventilation system, electrical and communication system, sanitary and fire protection system
FAS Services 2016-2017 (EGAT)	Supply and installation of fire alarm system
Gayson 2	Supply, installation and commissioning of air-conditioning and ventilation system, electrical and communication system, sanitary and fire protection system
King Power at Suvarnabhumi Airport	Operation and maintenance
Mahasawin Hotel	Supply, installation, testing and commissioning of air-conditioning, sanitary and fire protection systems
Main Villa - Ban Rai Sang dao	Supply and installation of air-conditioning and ventilation system, electrical and communication system, sanitary and fire protection system
Mega Bangna Plot H	Supply and installation of air-conditioning and ventilation system, sanitary and fire protection system, electrical and communication system
MRT	Supply and installation of air-conditioning and ventilation system for Blue Line Extension Project
Shrewsbury International School, City Campus	Supply, installation, testing and commissioning of air-conditioning and ventilation system, electrical and communication system, sanitary and fire protection system
Singha Complex	Supply, installation, testing and commissioning of mechanical and electrical system
Siriraj Hospital (Syamindra Building)	Supply and installation of sanitary system
Suvarnabhumi Airport Expansion Project, fiscal year 2011 - 2017 (SAT1)	Supply and installation of air-conditioning and ventilation system, sanitary and fire protection system, electrical and communication system
The Red Line Train Station (Don Mueang station, Lak Hok station and Rangsit station)	Supply, installation, testing and commissioning of air-conditioning and ventilation system, fire protection system and sanitary system
Singapore	
7-11 Stores	Maintenance of refrigerated cases
Asia Square Tower 1 & 2	Mechanical and electrical operation services
Assisi Hospice	Mechanical and electrical facility management
Bank of America (CBRE Pte Ltd)	Subcontract for facilities management services
Big Box Jurong	ACMV and chiller plant maintenance
DBS China Square Ltd (PWC Building)	Maintenance of ACMV system and provision of technicians
Grand Park City Hall	ACMV and BMS replacement
James Cook University	Maintenance of air-conditioning system
Keppel Towers / Tower 2	Mechanical and electrical facility management
Mandai Crematorium & Columbarium	ACMV maintenance
Marina Bay Business Financial Tower 1 & 2 (RQAM)	ACMV and plumbing services
Marina Bay Business Financial Tower 2 & 3	Mechanical and electrical facility management
Marina Bay Financial Centre and One Raffles Quay	Mechanical and electrical facility management
MBFC Tower 1 & 2 and Link Mall	ACMV preventive maintenance and plumbing and sanitary maintenance
Media Hub (Ayer Rajah)	Design and build of air-conditioning and mechanical ventilation installations, testing and commissioning, servicing and maintenance
One Raffles Link	Mechanical and electrical facility management
Overseas Family School	Variable refrigerant flow preventive maintenance
Resorts World Sentosa	Maintenance of district cooling plant
Singapore Technologies Electronics Limited (AMK)	ACMV maintenance
ST Electronics Ltd	Maintenance agreement for comprehensive maintenance works for air-conditioning chiller plant and converted air distribution systems
ST Microelectronic Pte Ltd (AMK & TPY Sites)	Ball tech auto tube system maintenance
Suntec City	Electrical system maintenance services
UOB Alexandra Building	Mechanical and electrical facility management
Westin Singapore (Daisho Development S'pore Pte Ltd)	Air-conditioning preventive maintenance
Philippines	
Doehle Haws Building	Maintenance of VRF air-conditioning system and relocation works of fan coil units
HVAC system of Plant A-C Admin Building (Tiwi, Albay)	Preventive maintenance
Integrated Facilities Management for JLL - IBM and JLL - Schneider Electric	Property and asset management
Marikina North Sewer Network and Pump Station	Design, build, testing and commissioning of sewage pumping station
Mondelez	Operation and maintenance
Property and Asset Management for various facilities managed by Jones Lang LaSalle	Operation and maintenance of facilities equipment
Property Management for Ayala Properties Management Corporation	Operation and maintenance
Putatan Water Treatment Plant 2	Design, build, testing and commissioning of water treatment plant
Sewage Treatment Plant in Libingan ng mga Bayani	Design and construction of sewage treatment plant facilities
Shopwise - Makati	Supply and installation of chilled water system
Sonion Manufacturing Plant	Supply and installation of HVAC units and MEPF
Taguig North Sub-Catchment Sewerage Project - Makati South Sewer Line and Pumping Station	Supply, build, testing and commissioning of sewage pumping station and lift stations
United Laboratories	Operation and maintenance
Universal Robina Corporation	Operation and maintenance

The Jardine Engineering Corporation, Limited

Hong Kong Headquarters

5/F, Tower A, Manulife Financial Centre, 223-231 Wai Yip Street,
Kwun Tong, Kowloon, Hong Kong
Tel 852 2807 1717 | Fax 852 2887 9090
Email jec@jec.com | www.jec.com

Mainland China

Room 2513-2514 Shenhua Commercial Building, No. 2018 Jiabin Road, Shenzhen 518005, PRC
Tel 86 755 8238 3928 | Fax 86 755 8238 3938 | Email jecchina@jec.com

Macau

Alameda Dr. Carlos D'Assumpcao, No. 180, Edf. Tong Nam Ah Centre Com 18/U-V, Macau
Tel 853 2825 3077 | Fax 853 2825 3076 | Email jecmacau@jec.com

Myanmar

1/4 Parami Road, Hlaing Township, Yangon, The Republic of the Union of Myanmar
Tel 95 1 661083 | Email jecmyanmar@jec.com

Philippines

G/F Jardine Building, 2901, JM Compound, Faraday Street Corner,
Osmeña Highway, 1234 Makati City, The Philippines
Tel 632 843 6020 | Fax 632 844 2235 | Email jecphilippines@jec.com

Singapore

96 Mandai Estate, Singapore 729927
Tel 65 6362 0660 | Fax 65 6362 0770 | Email jecsingapore@jec.com

Thailand

22/F Times Square Building, 246 Sukhumvit Road, Klongtoey,
Bangkok 10110, Thailand
Tel 66 2 254 0299 | Fax 66 2 254 0218 | Email jecthailand@jec.com

THE JARDINE ENGINEERING CORPORATION, LIMITED

