

JEC magazine

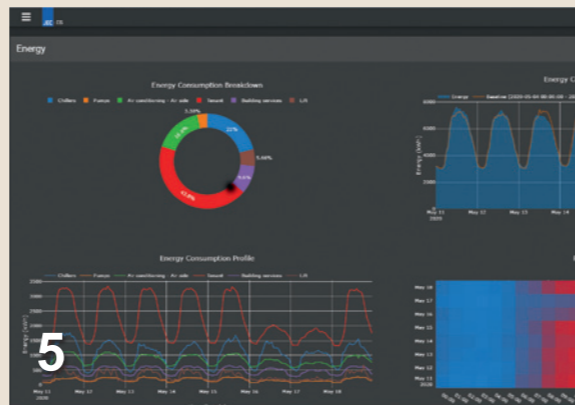
JUNE 2020 ISSUE46

Embracing Sustainability in Business



JEC magazine

ISSUE 46



CEO'S MESSAGE

行政總裁的話

The meaning of sustainability to enterprises is constantly being redefined as society progresses. While investors of the new generation are looking for companies to have a long-term plan beyond any temporary actions towards sustainable development, companies are seeking a deeper integration of environmental, social and governance issues into their business operations in order to deliver true value to all stakeholders. This issue takes a look at how JEC realises this new age of business ethics for customers and the community at large.

This issue has particular relevance in such uncertain times. Whilst we all navigate uncharted waters in all aspects of our lives, it has presented a chance to pause and think about our purpose – how will our businesses and communities look in the post COVID-19 pandemic world?

Please enjoy your read and continue to stay safe!

對於企業而言，社會的進步時常為「可持續發展」賦予新的定義。有別於以往的短期可持續發展方案，新世代的投資者尋求具備相關長遠規劃的企業，促使企業將環境、社會和管治與業務營運更緊密結合，為持份者帶來更豐厚的投資價值。今期雜誌講述怡和機器如何為客戶，以至社區實踐新時代的營商之道。

事實上，今期內容與充滿變數的現今世代也尤為相關，在我們為各方面的變化尋找出路之同時，這也是一個讓我們停下來思考的機會——我們的業務和社區在新冠肺炎過後將會有何轉變？

希望大家喜歡今期的內容，祝各位安全健康！

Kevin O'Brien
歐嘉榮

CONTENTS 目錄

3 CEO's Message | 行政總裁的話

4 Feature Story | 特寫

Embracing Sustainability in Business
實現企業可持續發展

9 News | 簡訊

JEC Takes Part in Tseung Kwan O
Desalination Plant Stage I Project
怡和機器參與將軍澳海水化淡廠
第一階段項目

JEC Group Briefing 2020
2020年度集團簡報會

Back-up Cooling Tower System Works
for HKUST
香港科技大學後備冷卻塔系統工程

Contracts for Link REIT Properties
領展物業機械通風及空調系統合約

12 Environmental, Health & Safety | 環境、健康與安全

Working Together to Combat Epidemic
齊心抗疫

14 News | 簡訊

Bangkok MRT Orange Line East
Section Contract
泰國曼谷地鐵橙綫東段工程合約

Bangkok ICS Tower Project
泰國曼谷ICS大樓項目

15 Achievements | 獎項成就

JEC Apprentice Named 2019
Outstanding Apprentice
怡和機器學徒獲選2019年傑出學徒

Trane Hong Kong Honoured with
Green Building Award 2019
特靈香港榮獲環保建築大獎2019

16 Training & Development | 培訓及發展

JEC Thailand Fosters Environmental
Care Culture
泰國怡和機器致力推動環保文化

18 Community Care | 關懷社區

JEC Caring Team Explores
Ma On Shan Mining Village with
Children
怡和機器義工與小朋友馬鞍山礦村探秘

JDI Offers Disaster Relief
JDI提供災後支援解困

JEC Thailand Spreads Love in
Community
泰國怡和機器社區送關愛

JEC Thailand Blood Donation
Campaign
泰國怡和機器捐血行動

Embracing Sustainability in Business

實現企業可持續發展



Strengthening ESG Integration at JEC

To help customers comply and keep up with the rising ESG standards, JEC has been working on the area by reviewing, upgrading and replacing existing products, and training the team so that we can follow best practice in the field.

JEC now offers a comprehensive digital business solution for building operations, with a focus on energy management, KPI reporting, benchmarking and optimisation. A digital analytics platform that utilises big data and machine learning/AI to deliver predictive and automated fault detection, as well as an optimisation algorithm that helps to reduce energy consumption for chiller plant and air-conditioning installations is being rolled out to customers. There is an ever-growing move towards environmentally sustainable practices and reduction of our carbon footprint. By handling all the data heavy lifting and analytics in the cloud, we aim to not only reduce the environmental impact, but do so while reducing energy bills and improving uptime of the property assets that we maintain.

強化怡和機器ESG方案

為協助客戶與時並進，緊貼不斷提升的ESG標準，怡和機器致力開拓此範疇，從檢視、升級和替換現有產品，及培訓團隊相關專業技術著手，以緊貼業界的最佳模式。

怡和機器為不同類型的建築物運作提供全面的數碼支援方案，尤其是能源管理、關鍵績效指標（KPI）報告、基準測試和優化等方面。怡和機器推出數碼系統分析平台，利用大數據、機器學習及人工智能等科技數據，提供預測性維修和自動故障檢測，以及透過優化算法，減少冷水機組的能源消耗。市場對實踐環境可持續發展及減少碳足跡的需求與日俱增，透過為客戶處理所有繁重的數據工作並進行雲端分析，此方案除了減少對環境的影響，也可減省能源開支成本，並延長建築物機組設備的壽命。

JEC offers award-winning energy-saving HVAC installations, not only from a new-build approach but by also optimising existing installations. These have so far been rolled out to the healthcare, metro and grade A office environments, proving that the demand is diverse as we all double down on our efforts to improve the impact we have on the planet in our 21st century daily lives.

Impacting the Community

Over the years, JEC has been involved in various environmental and utility projects across Asia for both public and private sector customers, ranging from waste and water filtration, waste-to-energy to natural energy resources and renewables.

Sewage and Wastewater Treatment

JEC improves the quality of effluent to create a cleaner and healthier environment through delivering comprehensive solutions for wastewater treatment.

To meet population growth and improve effluent sewage quality, JEC took part in the upgrade and extension of treatment capacity of sewage treatment plants in Hong Kong. Recent projects include Stage 1 upgrade works for Shek Wu Hui Effluent Polishing Plant, with an aim to increase the treatment capacity by 35,000m³/day, and will eventually increase to 190,000 m³/day upon completion of all stages.

In addition, JEC is also engaged in the works for Expansion of Sha Tau Kok Sewage Treatment Works Phase 1 (photo 1) to design and install electrical and mechanical systems for its temporary sewage treatment plant. The plant will have a treatment capacity of 2,500 m³/day and become the largest Moving Bed Biofilm Reactor (MBBR) plant in Hong Kong upon completion.



此外，怡和機器亦為新落成建築物及現有建築物之優化工程，提供一系列獲獎項認可的環保節能冷水機組，並已廣泛應用於醫療、鐵路設施與大型甲級辦公室等不同類型的建築物，引證了怡和機器能配合不斷提升的客戶需求，加強節能足跡，讓大眾輕鬆享受21世紀的新世代生活模式。

為社區注入正面影響

多年來，怡和機器參與亞洲區內多種類別的公營和私人機構的環境與公用事業項目，涵蓋廢物和污水過濾、轉廢為能，以至天然能源及可再生能源項目。

污水和廢水處理

怡和機器透過提供污水處理的綜合解決方案，改善廢水的質量，從而創造一個更潔淨、更健康的環境。

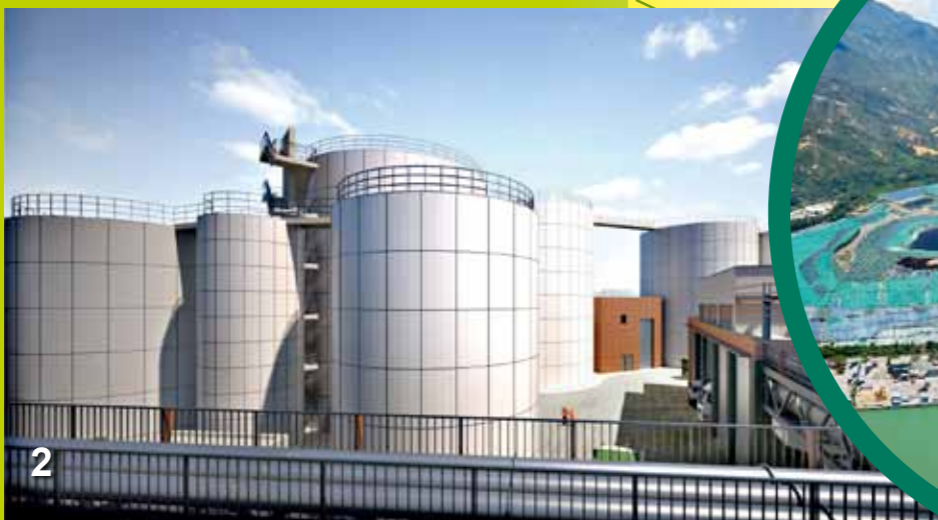
為配合人口增長和改善污水質量的需求，怡和機器參與香港污水處理廠處理能力的升級和擴充工程。最近的项目包



Waste-to-Energy

JEC has completed Hong Kong's largest landfill gas power generation project at the West New Territories Landfill (photos 3 & 4) for CLP Hong Kong last year. The facility, built to convert landfill gas into electricity, generates 10MW of electricity at full capacity. This previously unutilised resource can be put to good use by powering over 17,000 four-person households for per year.

At the same time, JEC, together with its joint venture partners, will design, build and operate O•PARK2 (ORRC phase 2; photo 2) for Environmental Protection Department at Sha Ling in North District, which will be able to treat 300 tonnes of food waste daily and



produce biogas providing electricity and heat for the facilities at O•PARK2. Once commissioned in 2022, the decrease in use of fossil fuels for electricity generation together with the reduced amount of organic waste being sent to landfills will reduce emissions of greenhouse gases by 67,000 tonnes and the amount of food waste disposed of at landfills by 110,000 tonnes annually.

Originally designed for the equestrian events of the 2008 Olympic Games, the Animal Waste Composting Plant at Ngau Tam Mei (photo 5) converts animal waste into high quality organic fertiliser for local farms. Facilities have been upgraded to increase treatment capacity by up to 40 tonnes a day and enable the co-composting of horse waste with other types of organic waste, including pig waste and yard waste.

括石湖墟淨水設施的第一階段工程，以增加35,000立方米的每日處理量，當所有階段完成後，每日的污水處理量可增至190,000立方米。

除此以外，怡和機器亦參與了沙頭角污水處理廠第一期擴建工程（圖一），負責為其臨時污水處理廠設計和安裝機電系統。廠房落成後，每日的處理量可達2,500立方米，並成為全港最大規模的移動床生物膜反應器（MBBR）污水處理設施。

Water

JEC is also engaged in the recent Hong Kong Tseung Kwan O Desalination Plant Project adopts reverse osmosis technology to produce potable water complying with the Hong Kong Drinking Water Standards under local conditions. Expected to commence operations in 2023, the plant will provide the city with a strategic water resource which is not susceptible to the impact of climate change.

**轉廢為能**

去年，怡和機器為中電完成全港最大規模的堆填區沼氣發電項目（圖三及四），於新界西堆填區興建及營運沼氣發電機組，總輸出量可達10兆瓦，足以為超過17,000個四人家家庭提供一年電力所需。

與此同時，怡和機器以合夥聯營方式為環境保護署設計、建造和營運位於北區沙嶺的有機資源回收中心第二期（O•PARK2；圖二），預期落成後每天可處理300公噸廚餘，以及利用過程中所產生的生物氣，為O•PARK2的設施供應電力和熱能需要。隨着O•PARK2在2022年啟用後，可減少使用化石燃料發電，加上減少棄置於堆填區的有機廢物，預計每年可縮減約67,000公噸的溫室氣體排放，以及每年可減少約110,000公噸運往堆填區棄置的廚餘。

此外，原為2008年奧運會騎術項目而設的牛潭尾動物廢料廠（圖五），現用作將動物廢料轉化成供本地農場使用的優質有機肥料。廠房已提升處理容量至每天40公噸，將馬糞和其他有機廢料如豬糞和庭院廢物共同堆肥。

水資源

怡和機器最近參與了香港將軍澳海水化淡廠工程項目，採用逆滲透海水化淡技術生產食水，可符合本地的食水標準。廠房預計於2023年落成，可為香港提供不受氣候變化影響的策略性替代水資源。

What is ESG?

Environmental, Social and Governance (ESG) criteria are a set of standards for a company's operations that socially-conscious investors use to screen potential investments.

Environmental criteria consider how a company performs as a steward of nature. Social criteria examine how it manages relationships with employees, suppliers, customers, and the communities where it operates. Governance deals with a company's leadership, executive pay, audits, internal controls, and shareholder rights.

As ESG-minded business practices gain more traction, investment firms are increasingly tracking their performance as these criteria help investors find companies with values that match their own.

甚麼是ESG？

環境、社會及管治原則（ESG）是具社會意識的投資者用作篩選具投資潛力的企業或機構時，所應用的一套標準。

環境（Environmental）因素考慮一間公司在營運時如何平衡對環境的影響；社會（Social）因素審視公司如何管理與員工、供應商、客戶及所在社區的關係；管治（Governance）因素則有關公司管治團隊、薪酬、審計、內部管理和股東權益。

隨着ESG愈受關注，投資公司亦加強追蹤其表現，作為協助投資者找尋與其自身價值所匹配的公司之準則。

Walking the Talk

Closer to home, JEC continues to scale up its efforts to integrate ESG thinking in its daily business and office operations. JEC is a signatory to the Business Environment Council's Low Carbon Charter in response to the goals of the United Nations Framework Convention on Climate Change (UNFCCC)'s Paris Agreement. Signatories are required to set decarbonisation targets, implement actions to achieve these, report progress regularly and spread the cause among their peers to join the decarbonisation journey.

To reduce its corporate impact on the environment, a "Sustainability@JEC" work group was established last year consisting of representatives from different business units to drive change from within, with initiatives including digital tools to replace paper, food waste composting, one-time paper and plastic use reduction, and a freecycle platform for staff to exchange reusable products.

Whilst caring for the environment and making a positive impact in the communities where JEC operates, the company acts with integrity and takes responsibility for the safety of everyone involved in all business activities. Actions taken to achieve zero accidents include continuous investment in safety training – for service providers and contractors as well as employees; investing and providing equipment to minimise and reduce the occurrence of accidents; and the sharing and discussion of safe working practices through various face to face and digital communication channels.



As sustainability is becoming an indispensable factor for enterprises to meet the needs of today without compromising those of our future generations, investors and customers and the community are taking account the role a business plays in its impact on the planet.

以行動實踐可持續發展

怡和機器同時將ESG元素融入至日常業務營運之中。為響應聯合國氣候變化框架公約中《巴黎協定》的目標，怡和機器簽署商界環保協會之低碳約章，以實際行動，制定及落實減碳目標、披露年度進程，並鼓勵同業攜手落實減碳。

為減少日常營運對環境的影響，怡和機器去年成立一個由不同業務部門代表組成的「Sustainability@JEC」工作小組，從內部推動變革，包括實行以電子化取代用紙、廚餘堆肥、減少單次使用紙張和塑膠，以及二手物品分享平台，讓員工交換可重用物品。

在關心環境和於所在社區發揮正面影響的同時，怡和機器亦以誠為營商之本，並對參與業務的所有人員負責。公司採取多方面的措施，以期達至零意外，包括為供應商、承包商和員工的安全培訓進行持續投資、提供相關的適當設備，將意外機會率減至最低，以及透過面對面及網上溝通渠道，分享和討論實踐安全工作之道。

隨著可持續發展逐漸成為企業不可或缺的營運元素，投資者及客戶亦將企業對環境所扮演的積極角色，成為決策要素之一，以延續下一代的長遠發展。



JEC Takes Part in Tseung Kwan O Desalination Plant Stage I Project 怡和機器參與將軍澳海水化淡廠第一階段項目



JEC with its joint venture partners was recently awarded the contract from the Water Supplies Department to design, build and operate the first stage of Tseung Kwan O Desalination Plant.

Building on a 8-hectare site, the first stage of construction targets a water production capacity at 135,000m³ per day with provision for future expansion to the ultimate water production capacity up to 270,000m³ per day and associated facilities. The product water will be transferred via a fresh water main to the existing Tseung Kwan O Fresh Water Primary Service Reservoir.

The desalination plant will adopt reverse osmosis technology to produce potable water complying with the Hong Kong Drinking Water Standards under local conditions. It is expected to commence operation in 2023, providing the city with a strategic water resource which is not susceptible to the impact of climate change.

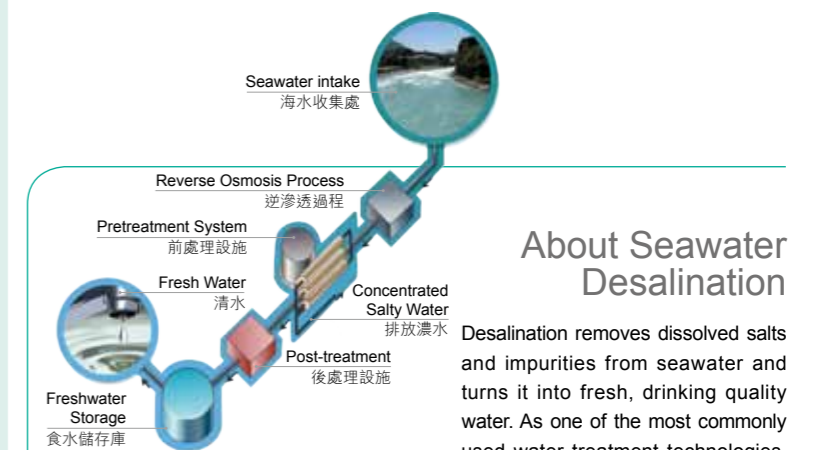


JEC Chief Executive Kevin O'Brien (second from right) and Executive Director and Chief Operating Officer Penn Yeung (first from right) attended the contract signing ceremony on behalf of the company. 怡和機器行政總裁歐嘉榮（右二）及執行董事兼營運總監楊志強（右一）代表公司出席簽約儀式。

怡和機器最近以合夥聯營方式獲得水務署的合約，負責將軍澳海水化淡廠第一階段的设计、建造和運作。

新興建的海水化淡廠佔地8公頃，其中第一階段工程的每日食水產量可達135,000立方米，並會預留空間以便日後可擴展至最終達270,000立方米之每日產水量，以及建造相關設施。由海水化淡廠所生產的食水會經水管，輸送至現有將軍澳食水主配水庫。

海水化淡廠將採用逆滲透技術，可有效地生產符合《香港食水標準》的食水。廠房預計於2023年啟用，屆時將可為香港提供不受氣候變化影響的策略性水資源。



關於海水化淡技術

海水化淡是一種水處理技術，其原理是利用能源把存在於海水中的鹽份及雜質隔離，從而將海水轉化為可飲用的淡水。其中逆滲透法是海水化淡最常見的處理技術之一，就香港情況而言，此方式相對於其他海水化淡技術（例如多級閃化法和多效蒸餾法）的生命週期成本更低，更為經濟可行，有效地在本地條件下生產符合《香港食水標準》的食水。

About Seawater Desalination

Desalination removes dissolved salts and impurities from seawater and turns it into fresh, drinking quality water. As one of the most commonly used water treatment technologies, Reverse Osmosis process has lower lifecycle cost compared to other desalination process technologies, such as Multi-Stage Flash (MSF) and Multiple Effect Distillation (MED), and hence is more economically viable. It is a proven technically feasible process that allows Hong Kong to produce potable water complying with the Hong Kong Drinking Water Standards.

JEC Group Briefing 2020 2020年度集團簡報會

JEC Chief Executive Kevin O' Brien delivered his annual address in live video broadcast format on 6 March, more than 180 staff from Hong Kong and regional offices connected on the platform and got a grasp of the company's achievements and strategic goals for the year ahead.



怡和機器行政總裁歐嘉榮於3月6日的集團簡報會，透過視像直播的方式，向超過180名香港及地區辦事處的員工，講述集團過去一年的業務表現和來年之策略目標。

Back-up Cooling Tower System Works for HKUST 香港科技大學後備冷卻塔系統工程



香港怡和機器獲得香港科技大學的合約，負責供應及安裝一組後備淡水冷卻塔系統，為現時以海水作主要散熱媒介的中央冷水機房提供緊急支援。此外，項目團隊會安裝全新的冷水機房控制系統，提升節能效益。項目預計於今年年底完成。

JEC Hong Kong has secured the contract from the Hong Kong University of Science & Technology (HKUST) to supply and install a freshwater back-up cooling tower system for its central chiller plant which uses seawater as primary cooling media for heat rejection. The team will also install a new chiller plant control system to achieve better energy efficiency. The project is expected to be completed in this December.



Contracts for Link REIT Properties 領展物業機械通風及空調系統合約



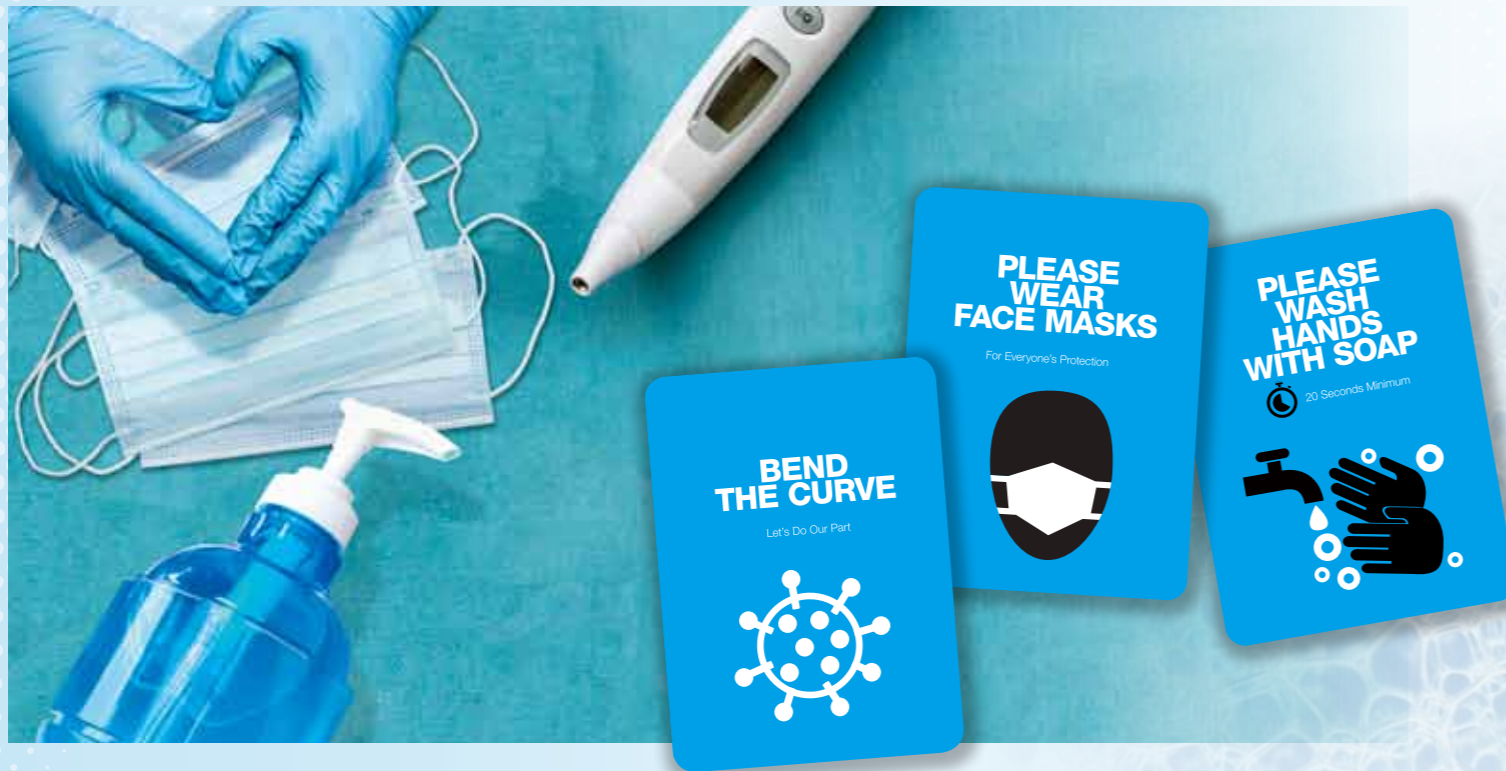
香港怡和機器獲得領展旗下位於九龍東、北區、港島區，以及大埔、沙田、馬鞍山、荃灣、東涌和將軍澳各區物業的合約，負責預防性維修保養及全天候緊急維修工作，涵蓋商場、停車場、街市及熟食檔等設施，合約期至2022年12月。

JEC Hong Kong has been awarded contracts for preventive maintenance services and 24-7 emergency callouts of the MVAC system at shopping centres, carparks, markets and cooked-food stalls under Link REIT in Kowloon East, North District, Hong Kong Island, and areas including Tai Po, Shatin, Ma On Shan, Tseun Wan, Tung Chung and Tseung Kwan O. The contract will end in December 2022.



Working Together to Combat Epidemic

齊心抗疫



In response to the outbreak of COVID-19 across the globe, JEC has implemented multiple plans and measures to keep all our staff in safe and healthy working environment. At the very first stage of the outbreak, a special committee was established to coordinate actions taken by different teams and departments in fighting against the virus. Besides, all business units in Hong Kong and regional offices are required to report the local situation at a timely manner, so that the committee can get hold of most up-to-date and first-hand information and determine actions as necessary, such as arranging proper Personal Protective Equipment (PPE) and support kits for all units, especially when relevant resources were tight at the beginning. It helped to keep offices and workplaces free from the virus. JEC also paid attention to the mental health of colleagues, a counseling hotline was provided to assist colleagues dealing with their emotion and adversity management ability under the epidemic.

To minimise the risk of possible transmission chain of

為應對全球新型冠狀病毒（COVID-19）的爆發，怡和機器實施一系列的措施，確保員工在安全健康的環境下工作。在疫情爆發初期，公司成立了特別委員會，負責協調不同團隊和部門的防疫工作。此外，香港及各區域辦事處均需及時報告該地區的疫情狀況，以便委員會掌握最新的第一手資訊，並在有需要時採取行動，例如在爆發初期物資緊張的時候，為各部門安排合適的個人防護裝備，以避免在辦公室和工作場所傳播和感染病毒。怡和機器亦同樣關注同事的精神健康，提供輔導熱綫，協助同事應對疫情下的情緒和逆境管理。

為了盡量減低新型冠狀病毒的傳播風險，公司引入了申報機制，讓所有辦公室及工地同事申報健康狀況和有關症狀。如有任何疑似個案，公司會建議員工在家檢疫隔離和進行相關測試，並會立即安排工作間之消毒和清潔。此外，集團亦嚴格遵守當地政府的政策和指引。

COVID-19, a reporting system has been introduced for all colleagues and work sites to report their health conditions or any symptoms in relation to COVID-19. Anyone with symptoms are advised to stay at home for quarantine and to go through relevant testing. Immediate sanitisation and cleaning works at the workplace will also be arranged as soon as there are any suspected cases. In addition, policies and instructions of local governments were strictly followed.

At operational level, Health & Safety, Environmental and Quality team is responsible for keeping the site safe and hygienic during this period. Information such as symptoms of the disease and measures to maintain personal and workplace hygiene has been widely shared and circulated within JEC. Our colleagues and workers are well-prepared to maintain a high level of hygiene standard, in order to minimise the chance of infection.

Externally, we also work hand in hand with clients to cope with the pandemic situation. We provided professional deep cleaning service of the Mechanical Ventilation and Air Conditioning systems for buildings affected by COVID-19, so that they can resume businesses with a secured and clean environment. During this challenging time, we deliver quality work and offer our best services to help clients mitigate the situation. In the meantime, we also provide necessary training for our workers on the proper use of specific protective equipment when they carry out deep cleaning works while give the best protection to themselves.

The COVID-19 pandemic is preventable through collaborations and enforcing measures from everyone so as to contain the spread effectively.



在營運層面，怡和機器健康、安全、環境與質量團隊專責在疫情期間維持工作場所的安全衛生。怡和機器內部亦廣泛分享和發放各項疫情資訊，如常見症狀，以至如何保持個人及工作場所衛生的措施。公司的同事和前線同事工作時亦做好充分準備，達到嚴格的衛生標準，以避免受感染。



對外方面，怡和機器與客戶攜手應對疫情，當中包括為受新型冠狀病毒影響的建築物，提供專為機械通風及空調系統而設的專業深層清洗服務，讓客戶們可在安全、潔淨的環境中恢復營運。在這段時期，怡和機器透過提供高質素及最合適的服務，幫助客戶解決安全衛生憂慮。與此同時，公司亦為前線同事提供所需培訓，確保他們在進行深層清洗工作時，能正確使用特製的防護裝備，保障自身安全。

要預防新型冠狀病毒繼續肆虐，除了強而有力的措施外，也需要每個人的積極配合，方能有效地讓病毒絕跡。

Bangkok MRT Orange Line 泰國曼谷地鐵 East Section Contract 橙綫東段工程合約



泰國怡和機器獲得合約，為曼谷地鐵橙綫東段供應、安裝、測試及調試環境控制系統、排水系統、消防系統以及電氣系統，工程範圍包括沿綫兩個地底車站（蘭沙里站和詩布拉帕站）及三座通風樓。項目預計於2022年10月完成。

JEC Thailand was awarded a contract to supply, install, test and commission environmental control system, plumbing & drainage system, fire services system and electrical system for Bangkok MRT Orange Line East Section. The scope of work covers 2 underground stations (Lam Sali and Sri Burapha) along the line and 3 intervention shafts. It is expected to be completed by October 2022.



Bangkok ICS 泰國曼谷ICS Tower Project 大樓項目

JEC Thailand secured the contract for supply, installation, testing and commissioning of sanitary & fire protection system and air conditioning & ventilation system at the ICS Tower by the Chao Phraya River, Bangkok.

Opposite to the landmark shopping mall ICONSIAM with a total area of 8,800 sqm, the project is a mixed-use development that includes a 11-storey office building with shopping mall as well as a 29-storey Hilton Garden Inn hotel.

The project is expected to be completed in June 2021.



泰國怡和機器獲得合約，為座落於曼谷湄南河畔的ICS大樓供應、安裝、測試及調試衛生與消防系統，以及空調與通風系統。ICS大樓位於地標購物中心ICONSIAM對面，是一個佔地8,800平方米的綜合項目，包括樓高11層的寫字樓、商場及樓高29層的希爾頓花園酒店。

項目預計於2021年6月完成。

JEC Apprentice Named 2019 Outstanding Apprentice

怡和機器學徒獲選 2019年傑出學徒

Chan Kar Hei, Air-conditioning Craft Apprentice from Maintenance & Renovation team was bestowed the 2019 Outstanding Apprentices Award by Hong Kong Vocational Training Council after the two-year programme.

保養及維修部冷氣學徒陳嘉希憑著兩年實習期間的出色表現，獲職業訓練局於2019年傑出學徒獎勵計劃中，選為傑出學徒。



"I am very thankful for the opportunities the company and colleagues have given me. The programme has deepened my knowledge and practical skills in the field. I love my job even more now and I will seek continuous improvement through ongoing learning."

我很感謝公司和同事的悉心栽培，讓我學習更多相關專業技術，做到活學活用。我現在更熱愛這份工作，往後會繼續以堅持態度，持續進修和工作，追求自我提升。

Trane Hong Kong Honoured with Green Building Award 2019

特靈香港榮獲 環保建築大獎2019

JEC's joint venture partner Trane Hong Kong has been awarded the Grand Award in the Building Products & Technologies Category at Green Building Award 2019 by the Professional Green Building Council and the Hong Kong Green Building Council for its new Trane CenTraVac™ Chillers @R514A.

Equipped with the latest low-pressure refrigerant R514A, this flagship model has been adopted by large-scale government projects such as Queensway Government Office, for its promising performance that effectively fulfils the environmental goals of Hong Kong 2030+.

怡和機器之合資伙伴特靈香港的全新冷水機組 Trane CenTraVac™ Chillers @R514A，榮獲環保建築專業議會及香港綠色建築議會頒發環保建築大獎2019的建築產品及科技類別大獎。



此旗艦級機組配備新一代低壓環保雪種R514A，目前已應用於金鐘政府合署等大型政府項目，可更有效地達成《香港2030+》所訂立的減排目標。



Frankie Chan, Managing Director of Trane Hong Kong (4th from right), together with his management team, receives the Green Building Award from Michael Wong, JP, Secretary for Development (4th from left). 特靈香港董事總經理陳偉平（右四）與其管理團隊，接受發展局局長黃偉綸（左四）頒發的獎項。

JEC Thailand Fosters Environmental Care Culture 泰國怡和機器 致力推動環保文化



JEC Thailand Training & Development team advocates “We Go Green” mindset to staff as soon as they become a member of the company.

This year, Training & Development team is launching a campaign to further promote the adoption of 3R principle – Reduce, Reuse and Recycle in plastic use and waste separation with the aid of digital technologies.

Apart from basic green practices such as waste separation and plastic reduction, JEC Thailand also promotes the use of categorised waste baskets, reusable plastic packaging and paper usage reduction in head and site offices.

By collecting reusable and recyclable waste for suitable waste treatment, JEC Thailand categorises waste into 5 different types namely plastic, paper, metal and glass, hazardous, general and food for proper disposal, while the organic fertiliser composted from food waste is distributed to colleagues and people in need.



泰國怡和機器的培訓與發展團隊近年推行綠色環保概念，從員工加入公司起，便積極灌輸相關文化。

今年，培訓與發展團隊應用數碼科技，進一步推廣「3R」原則，以減少（Reduce）、循環再用（Reuse）及回收（Recycle）塑料及進行廢物分類。



On the other hand, colleagues are encouraged to use lunch boxes and bags made from natural materials instead of plastic bags and foam boxes to minimise waste. Moreover, reusable food carriers and fabric bags are distributed to colleagues and customers to encourage them to adopt reusable materials and reduce single-use plastic products.

JEC Thailand is also planning to launch a digital learning platform to further reduce the use of paper and other resources. Some courses on the platform will be open to public as part of knowledge sharing and corporate social responsibility. In daily operations, Training & Development team is taking the lead in going paperless such as using e-handouts and ordering food with eco-friendly packaging. The team encourages colleagues to integrate the concept into daily lives via various internal communication channels and trainings, so that everyone plays a part in saving the planet.



除了實行廢物分類與減少塑膠等基本的環保措施外，泰國怡和機器也在總辦事處及各工地辦公室採用垃圾分類設施、可循環再用的塑膠包裝，以及減少使用紙張。

為通過收集可循環再用及可回收的廢物進行適當處理，泰國怡和機器將廢物分為五大種類，分別是塑料、紙張、金屬和玻璃、有害廢料、和一般垃圾及食物，以作妥善處置；至於由廚餘轉化而成的有機肥料，則會分配予同事及社區上的有需要人士。

另一方面，團隊鼓勵同事使用由天然物料製成的午餐盒和手提袋，以取代塑膠袋及發泡膠盒，盡量減少浪費。此外，公司也向同事及客戶派發可重用的食物容器和布袋，以鼓勵他們使用更多可循環再用的物料，從而減少使用即棄塑膠產品。

泰國怡和機器亦即將推出網上學習平台，進一步減少使用紙張和其他資源。該平台部份課程會開放予公眾參與，以作為知識共享和企業社會責任的一部分。在日常營運中，培訓和發展團隊帶頭實現無紙化辦公室，如使用電子講義及選用環保包裝的食品。團隊也鼓勵同事通過各種內部溝通渠道和培訓，將奉行環保的理念融合至日常生活中，讓每人發揮一分力量，保護地球。

JEC Caring Team Explores Ma On Shan Mining Village with Children

JEC Caring Team brought 14 children from the Hong Kong Children and Youth Services to the revitalised Ma On Shan Mining Village in last December, a reminiscence of Hong Kong's unique mining industry in the 1950s. The group was guided to visit the mining site, search for iron ores and make mine cookies, getting a real look into a miner's life in the old days.



怡和機器義工與小朋友 馬鞍山礦村探秘



怡和機器義工隊於去年12月，帶領14位香港青少年服務處的小朋友前往馬鞍山礦村，走訪礦場遺址、尋找鐵礦石及製作礦村曲奇，親身探究香港1950年代獨特的採礦歷史，體驗昔日礦工生活。

JDI Offers Disaster Relief JDI提供災後支援解困



JEC's subsidiary Jardine Distribution Inc (JDI) provided relief to Filipinos who were affected by super typhoon Kammuri and eruption of the Taal Volcano, the second most active volcano in the Philippines during last December and January this year. The products and hygiene kits donated by JDI came as a timely relief and supported reestablishment works.

JEC Thailand Spreads Love in Community 泰國怡和機器社區送關愛

Ten volunteers from JEC Thailand visited Banladnoi School at the Phetchabun Province in Northern-central Thailand with necessities. The team also donated food and played fun games with the students to build a good relationship.



十位來自泰國怡和機器的義工帶同一批生活用品，探訪泰國中北部碧差汶府的Banladnoi學校。義工們亦即場派發食物及與學生互動，加深彼此認識。

JEC Thailand Blood Donation Campaign 泰國怡和機器捐血行動

JEC Thailand hosted 'Giving Blood with My Heart' campaign in its Bangkok office in January 2020. Co-organised with Thai Red Cross Society, more than 30 staff answered the call to help patients and save lives.



泰國怡和機器於2020年1月與當地紅十字會合辦捐血活動，獲得超過30名員工響應，在曼谷辦事處的捐血站以行動為救傷扶危工作出一分力。



